

10/22/2020 2:10 PM

JELD-WEN, inc.

CUSTOM ALUMINUM CLAD OUTSWING PATIO DOORS (NON-HVHZ)(IMPACT)



JELD-WEN, inc.
3737 LAKEPORT BOULEVARD
KLAMATH FALLS, OR 97601
PH: (541) 882-3451 FX: (541) 850-2609

INSTALLATION NOTES:

- ONE (1) INSTALLATION ANCHOR IS REQUIRED AT EACH ANCHOR LOCATION SHOWN.
- THE NUMBER OF INSTALLATION ANCHORS DEPICTED IS THE MINIMUM NUMBER OF ANCHORS TO BE USED FOR PRODUCT INSTALLATION OF THE MAXIMUM SIZE LISTED.
- INSTALL INDIVIDUAL INSTALLATION ANCHORS WITHIN A TOLERANCE OF ±1/2 INCH (I.E., WITHOUT CONSIDERATION OF TOLERANCES). TOLERANCES ARE NOT CUMULATIVE FROM ONE INSTALLATION ANCHOR TO THE NEXT.
- SHIM AS REQUIRED AT EACH INSTALLATION ANCHOR WITH LOAD BEARING SHIM(S). MAXIMUM ALLOWABLE SHIM STACK TO BE 1/4 INCH. SHIM WHERE SPACE OF 1/16 INCH OR GREATER OCCURS. SHIM(S) SHALL BE CONSTRUCTED OF HIGH DENSITY PLASTIC OR BETTER.
- THROUGH FRAME:** FOR INSTALLATION INTO 2X WOOD FRAMING OR BUCKING USE #12 WOOD SCREWS OF SUFFICIENT LENGTH TO ACHIEVE 1 1/2 INCH MINIMUM EMBEDMENT INTO WOOD SUBSTRATE.
- THROUGH FRAME:** FOR INSTALLATION THROUGH 1X BUCK TO CONCRETE/MASONRY, OR DIRECTLY INTO CONCRETE/MASONRY, USE 1/4 INCH DIAMETER ITW TAPCONS OF SUFFICIENT LENGTH TO ACHIEVE 1 1/4 INCH MINIMUM EMBEDMENT.
- MINIMUM EMBEDMENT AND EDGE DISTANCE EXCLUDE WALL FINISHES, INCLUDING BUT NOT LIMITED TO STUCCO, FOAM, BRICK VENEER, AND SIDING.
- INSTALLATION ANCHORS AND ASSOCIATED HARDWARE MUST BE MADE OF CORROSION RESISTANT MATERIAL OR HAVE A CORROSION RESISTANT COATING.
- FOR HOLLOW BLOCK AND GROUT FILLED BLOCK, DO NOT INSTALL INSTALLATION ANCHORS INTO MORTAR JOINTS. EDGE DISTANCE IS MEASURED FROM FREE EDGE OF BLOCK OR EDGE OF MORTAR JOINT INTO FACE SHELL OF BLOCK.
- INSTALLATION ANCHORS SHALL BE INSTALLED IN ACCORDANCE WITH ANCHOR MANUFACTURER'S INSTALLATION INSTRUCTIONS, AND ANCHORS SHALL NOT BE USED IN SUBSTRATES WITH STRENGTHS LESS THAN THE MINIMUM STRENGTH SPECIFIED BY THE ANCHOR MANUFACTURER.
- INSTALLATION ANCHOR CAPACITIES FOR PRODUCTS HEREIN ARE BASED ON SUBSTRATE MATERIALS WITH THE FOLLOWING PROPERTIES:
 - WOOD - MINIMUM SPECIFIC GRAVITY OF 0.42 (SPRUCE-PINE-FIR).
 - CONCRETE -MINIMUM COMPRESSIVE STRENGTH OF 3000 PSI.
 - GROUT-FILLED CMU- UNIT STRENGTH CONFORMS TO ASTM C-90 WITH MINIMUM COMPRESSIVE STRENGTH OF 2000 PSI AND GROUT CONFORMS TO ASTM C 476, MINIMUM GROUT COMPRESSIVE STRENGTH OF 2000 PSI.
 - HOLLOW BLOCK CMU - UNIT STRENGTH CONFORMS TO ASTM C-90 WITH MINIMUM COMPRESSIVE STRENGTH OF 2000 PSI.

GENERAL NOTES:

- THE PRODUCT SHOWN HEREIN IS DESIGNED AND MANUFACTURED TO COMPLY WITH THE CURRENT FLORIDA BUILDING CODE AND HAS BEEN EVALUATED ACCORDING TO THE FOLLOWING:
 - AAMA/WDMA/CSA 101/I.S.2/A440-11
 - ASTM E1886-13A
 - ASTM E1996-14A
- ADEQUACY OF THE EXISTING STRUCTURAL CONCRETE/MASONRY AND 2X STUD FRAMING AS A MAIN WIND FORCE RESISTING SYSTEM CAPABLE OF WITHSTANDING AND TRANSFERRING APPLIED PRODUCT LOADS TO THE FOUNDATION IS THE RESPONSIBILITY OF THE ENGINEER OR ARCHITECT OF RECORD FOR THE PROJECT OF INSTALLATION.
- 1X AND 2X BUCKS (WHEN USED) SHALL BE DESIGNED AND ANCHORED TO PROPERLY TRANSFER ALL LOADS TO THE STRUCTURE. BUCK DESIGN AND INSTALLATION IS THE RESPONSIBILITY OF THE ENGINEER OR ARCHITECT OF RECORD FOR THE PROJECT OF INSTALLATION.
- THE INSTALLATION DETAILS DESCRIBED HEREIN ARE GENERIC AND MAY NOT REFLECT ACTUAL CONDITIONS FOR A SPECIFIC SITE. IF SITE CONDITIONS CAUSE INSTALLATION TO DEVIATE FROM THE REQUIREMENTS DETAILED HEREIN, A LICENSED ENGINEER OR ARCHITECT SHALL PREPARE SITE SPECIFIC DOCUMENTS FOR USE WITH THIS DOCUMENT.
- THIS PRODUCT **DOES NOT** REQUIRE IMPACT PROTECTIVE DEVICES IN WIND ZONE 3 OR LESS.
- THIS PRODUCT **DOES** REQUIRE IMPACT PROTECTIVE DEVICES IN WIND ZONE 4.
- JELD-WEN inc. DOOR FRAME MATERIAL: PRESSURE TREATED PINE.
- DOOR CLADDING MATERIAL: ALUMINUM 6063-T5
- GLASS MEETS THE REQUIREMENTS OF ASTM E1300-04 GLASS CHARTS. SEE SHEET 9 FOR GLAZING DETAILS.
- DESIGNATIONS "X" AND "O" STAND FOR THE FOLLOWING:
X: OPERABLE PANEL
O: FIXED PANEL

| TABLE OF CONTENTS | | |
|-------------------|----------|---|
| SHEET | REVISION | SHEET DESCRIPTION |
| 1 | - | INSTALLATION & GENERAL NOTES |
| 2 | - | ELEVATION & ANCHOR LAYOUT (1) |
| 3 | - | ELEVATION & ANCHOR LAYOUT (2) |
| 4 | - | ELEVATION & ANCHOR LAYOUT (3) |
| 5 | - | ELEVATIONS & ANCHOR LAYOUTS (4) |
| 6 | - | VERTICAL SECTIONS |
| 7 | - | HORIZONTAL SECTIONS |
| 8 | - | HORIZONTAL SECTIONS & MULLION CLIP DETAIL |
| 9 | - | GLAZING DETAILS |
| 10 | - | COMPONENTS & BILL OF MATERIALS |
| 11 | - | COMPONENTS |
| 12 | - | TYP. QUALIFIED CONFIGURATIONS |
| 13 | - | SHOOT BOLT STRIKE DETAILS |
| 14 | - | LATCH & DEADBOLT STRIKE DETAILS |

| DESIGN PRESSURE RATING | | |
|------------------------|-----------------------------|--------------------------------------|
| GLAZE TYPE | DESIGN PRESSURE - ALL SIZES | MISSILE IMPACT RATING |
| 1 | +/- 50.0 PSF | LARGE AND SMALL MISSILE IMPACT RATED |
| 2 | | |

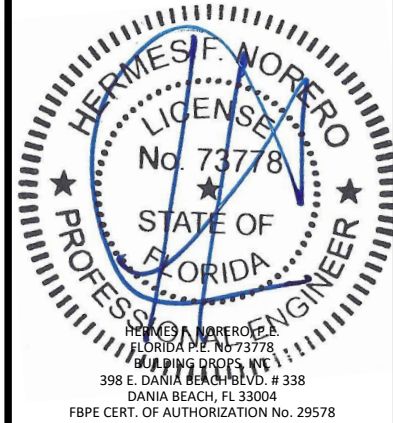
TITLE: CUSTOM CLAD WOOD OUTSWING DOORS (NON-HVHZ)(IMPACT) INSTALLATION & GENERAL NOTES

PREPARED BY: BUILDING DROPS, INC.
398 E. DANIA BEACH BLVD., STE. 338
DANIA BEACH, FL 33004
PH: (954) 959-8478
FAX: (954) 744-4738
WEB: www.buildingdrops.com



| REMARKS | BY | DATE |
|---------------------|----|-------|
| 7TH FBC CODE CHANGE | LL | 10/20 |
| | | |
| | | |

THE INSTALLATION DETAILS DESCRIBED HEREIN ARE GENERIC AND MAY NOT REFLECT ACTUAL CONDITIONS FOR A SPECIFIC SITE. IF SITE CONDITIONS CAUSE INSTALLATION TO DEVIATE FROM THE REQUIREMENTS DETAILED HEREIN, A LICENSED ENGINEER OR ARCHITECT SHALL PREPARE SITE SPECIFIC DOCUMENTS FOR USE WITH THIS DOCUMENT.



DATE: 06.21.13

DWG. BY: ADS CHK. BY: HFN

SCALE: NTS

DWG. #: JW018

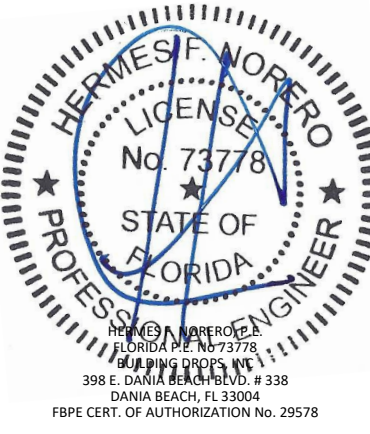
SHEET 1 OF 14

TITLE: CUSTOM CLAD WOOD
OUTSWING DOORS
(NON-HVHZ)/(IMPACT)
ELEVATION & ANCHOR LAYOUT
(1)

PREPARED BY:
BUILDING DROPS, INC.
398 E. DANIA BEACH BLVD., STE. 338
DANIA BEACH, FL 33004
PH: (954) 999-8478
FAX: (954) 744-4738
WEB: www.buildingdrops.com

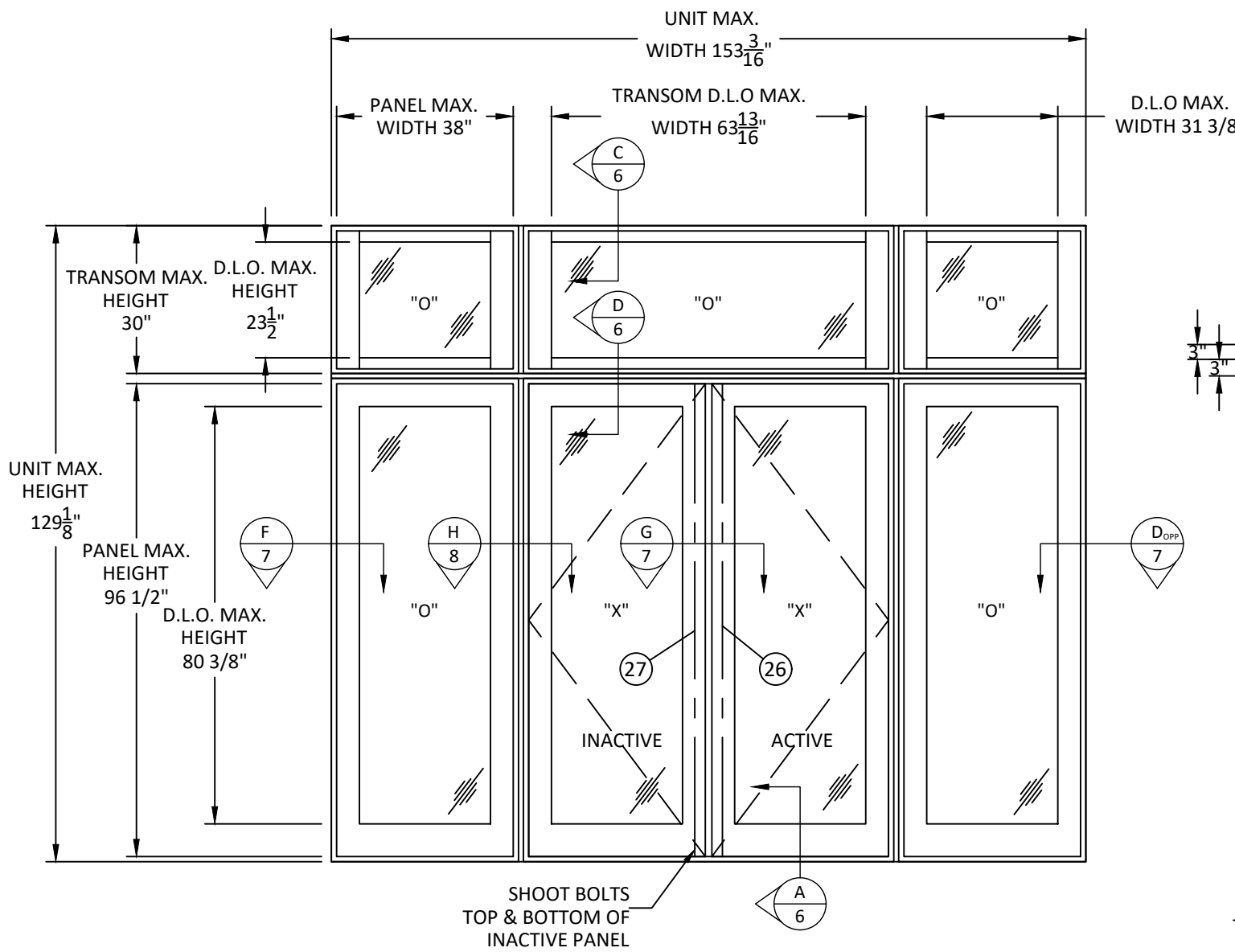
| REMARKS | BY | DATE |
|---------------------|----|-------|
| 7TH FBC CODE CHANGE | LL | 10/20 |
| | | |
| | | |

THE INSTALLATION DETAILS DESCRIBED HEREIN ARE GENERIC AND MAY NOT REFLECT ACTUAL CONDITIONS FOR A SPECIFIC SITE. IF SITE CONDITIONS CAUSE INSTALLATION TO DEVIATE FROM THE REQUIREMENTS DETAILED HEREIN, A LICENSED ENGINEER OR ARCHITECT SHALL PREPARE SITE SPECIFIC DOCUMENTS FOR USE WITH THIS DOCUMENT.

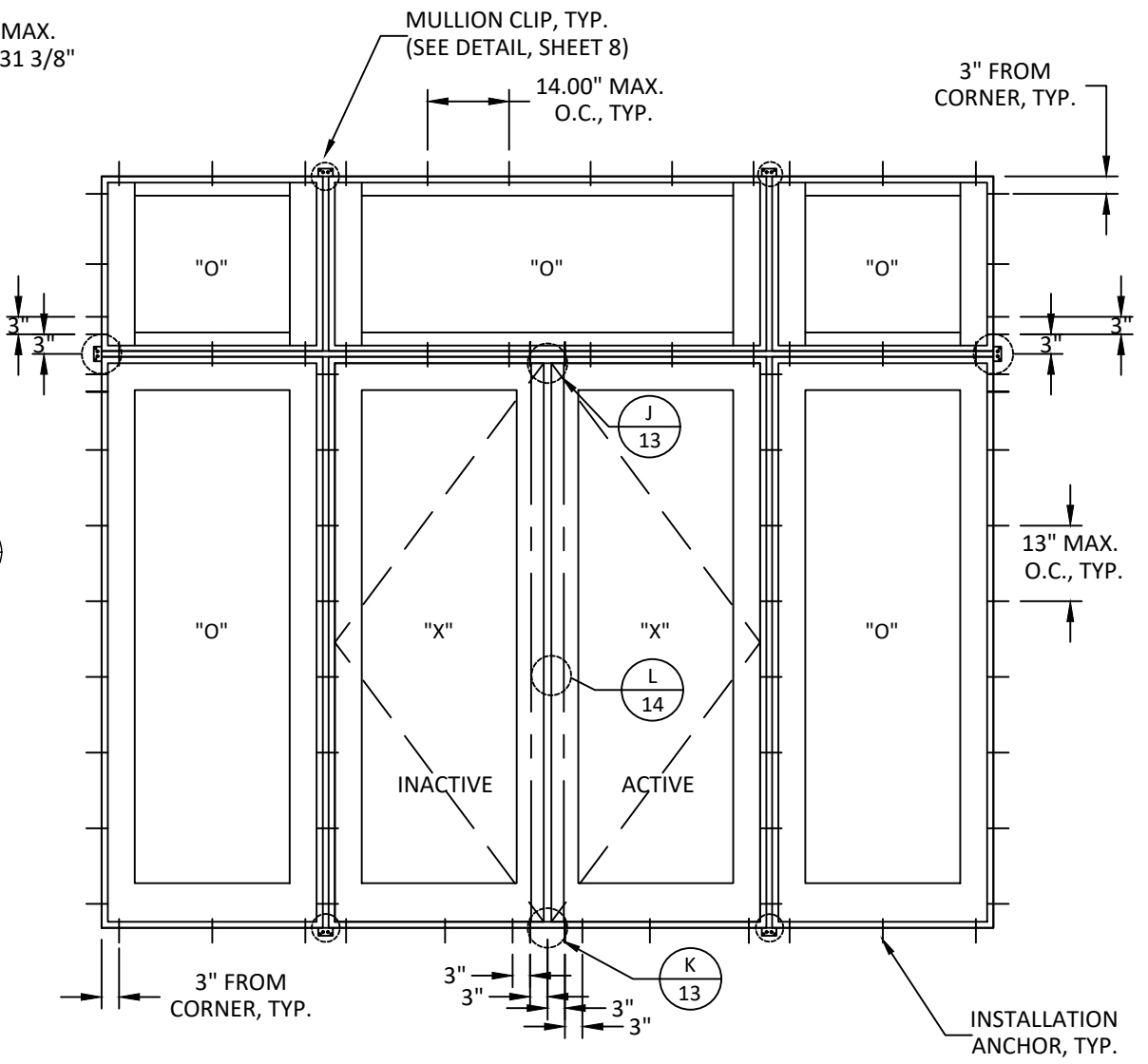


HERMES F. NORERO, P.E.
FLORIDA P.E. NO. 73778
BUILDING DROPS, INC.
398 E. DANIA BEACH BLVD., H 338
DANIA BEACH, FL 33004
FBPE CERT. OF AUTHORIZATION No. 29578

| | |
|----------|-----------------|
| DATE: | 06.21.13 |
| DWG. BY: | ADS |
| CHK. BY: | HFN |
| SCALE: | NTS |
| DWG. #: | JW018 |
| SHEET | 2 |



TYPICAL ELEVATION
AS TESTED

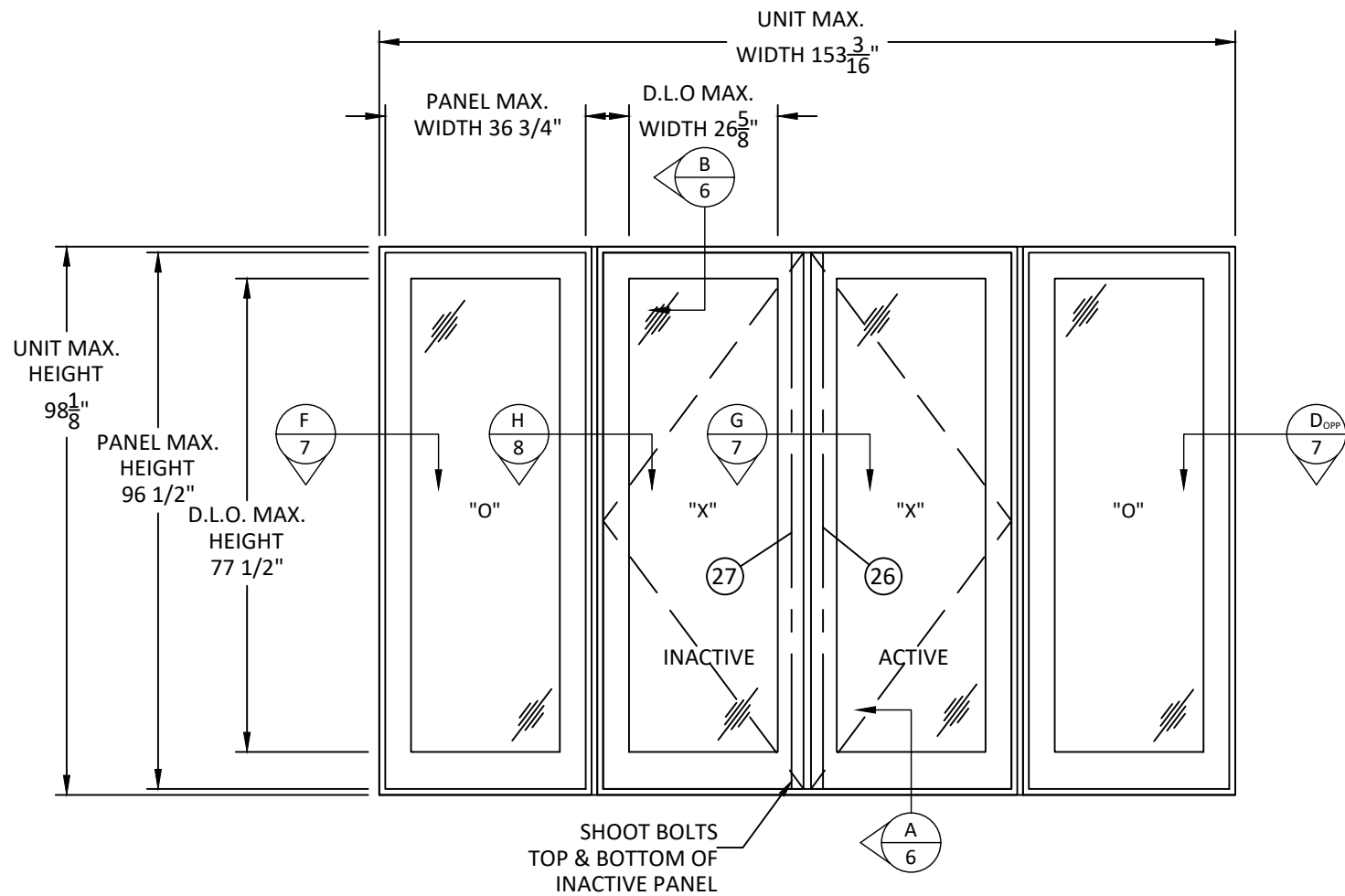


ANCHOR LAYOUT

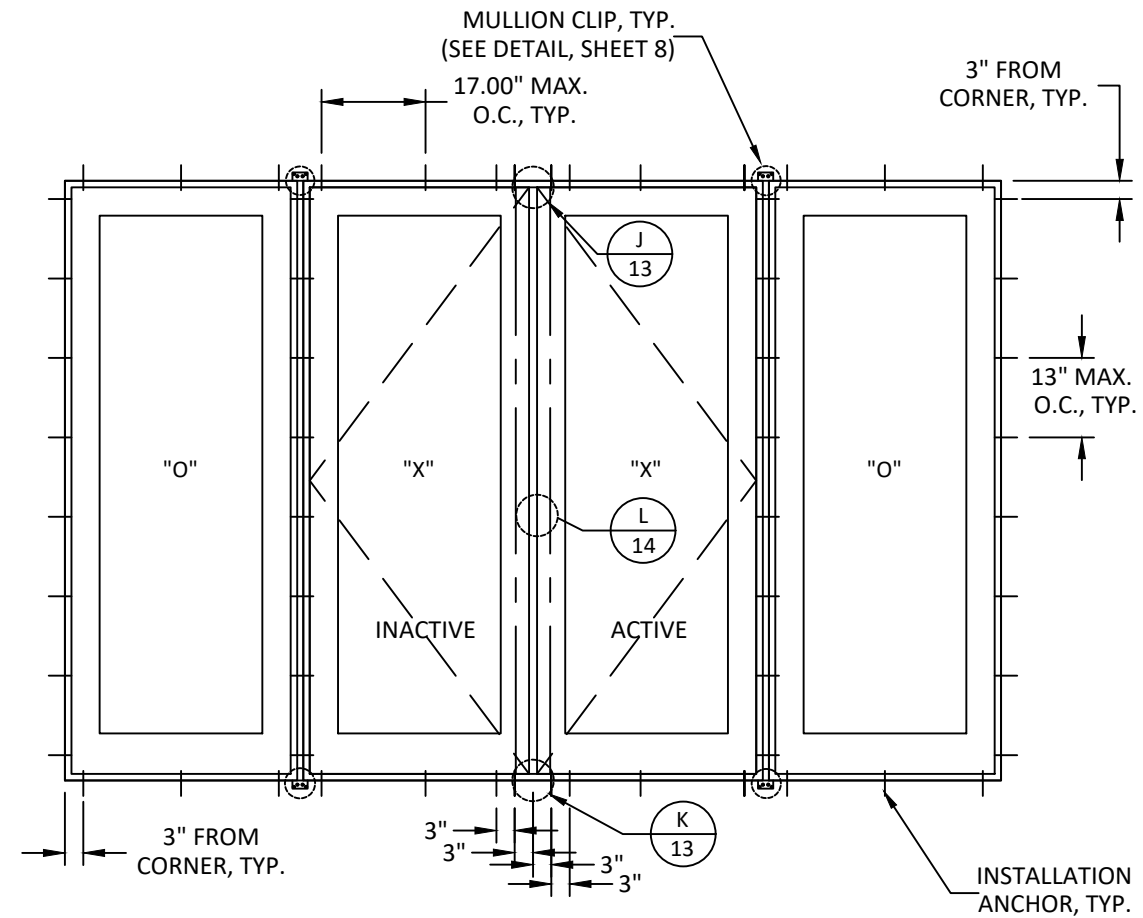
| CONFIGURATION | UNIT WIDTH | UNIT HEIGHT | DESIGN PRESSURE RATING |
|---------------|------------|-------------|------------------------|
| O-O-O/O-X-X-O | 153-3/16" | 129-1/8" | +50.0/-50.0 PSF |

- NOTE:
1. PRODUCTS SHOWN HEREIN MEET WATER INFILTRATION REQUIREMENTS BASED UPON POSITIVE PRESSURE RATING.
 2. SEE SHEET 9 FOR GLAZING OPTIONS AND REQUIREMENTS.

c:\users\luz.lopes\desktop\manager\building_drops\projects\jeld-wen\vc-20-1002\dwgs\jw018_2020-10-22.dwg 10/22/2020 2:10 PM



TYPICAL ELEVATION
AS TESTED



ANCHOR LAYOUT

| CONFIGURATION | UNIT WIDTH | UNIT HEIGHT | DESIGN PRESSURE RATING |
|---------------|------------|-------------|------------------------|
| O-X-X-O | 153-3/16" | 98-1/8" | +50.0/-50.0 PSF |

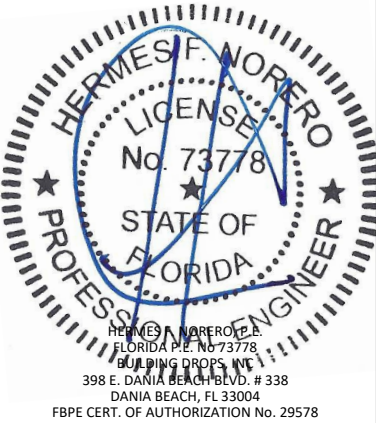
- NOTE:**
1. PRODUCTS SHOWN HEREIN MEET WATER INFILTRATION REQUIREMENTS BASED UPON POSITIVE PRESSURE RATING.
 2. SEE SHEET 9 FOR GLAZING OPTIONS AND REQUIREMENTS.

TITLE: CUSTOM CLAD WOOD
OUTSWING DOORS
(NON-HVHZ)/(IMPACT)
ELEVATION & ANCHOR LAYOUT
(2)

PREPARED BY:
BUILDING DROPS, INC.
398 E. DANIA BEACH BLVD., STE. 338
DANIA BEACH, FL 33004
PH: (954) 999-8478
FAX: (954) 744-4738
WEB: www.buildingdrops.com

| REMARKS | BY | DATE |
|---------------------|----|-------|
| 7TH FBC CODE CHANGE | LL | 10/20 |
| | | |
| | | |

THE INSTALLATION DETAILS DESCRIBED HEREIN ARE GENERIC AND MAY NOT REFLECT ACTUAL CONDITIONS FOR A SPECIFIC SITE. IF SITE CONDITIONS CAUSE INSTALLATION TO DEVIATE FROM THE REQUIREMENTS DETAILED HEREIN, A LICENSED ENGINEER OR ARCHITECT SHALL PREPARE SITE SPECIFIC DOCUMENTS FOR USE WITH THIS DOCUMENT.



DATE: **06.21.13**
DWG. BY: **ADS** | CHK. BY: **HFN**
SCALE: **NTS**
DWG. #: **JW018**

SHEET
3
OF 14

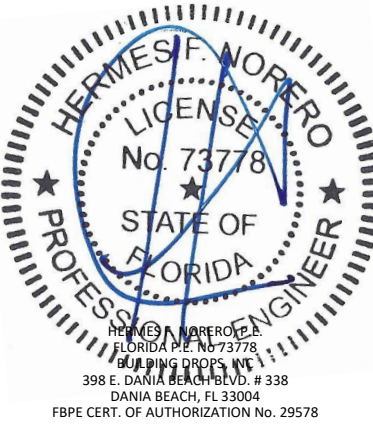
TITLE: CUSTOM CLAD WOOD
OUTSWING DOORS
(NON-HVHZ)/(IMPACT)
ELEVATION & ANCHOR LAYOUT
(3)

PREPARED BY:
BUILDING DROPS, INC.
398 E. DANIA BEACH BLVD., STE. 338
DANIA BEACH, FL 33004
PH: (954) 999-8478
FAX: (954) 744-4738
WEB: www.buildingdrops.com



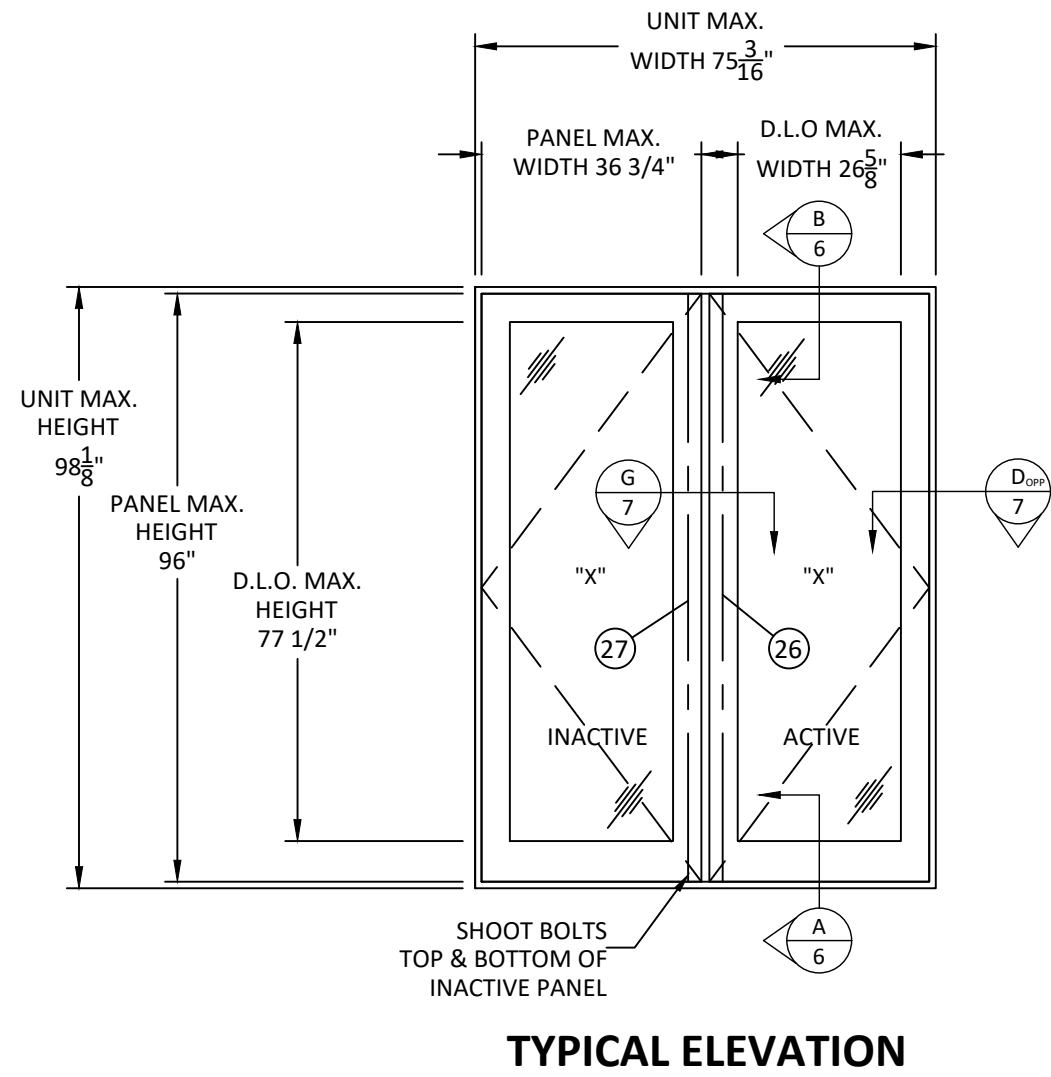
| REMARKS | BY | DATE |
|---------------------|----|-------|
| 7TH FBC CODE CHANGE | LL | 10/20 |
| | | |
| | | |

THE INSTALLATION DETAILS DESCRIBED HEREIN ARE GENERIC AND MAY NOT REFLECT ACTUAL CONDITIONS FOR A SPECIFIC SITE. IF SITE CONDITIONS CAUSE INSTALLATION TO DEVIATE FROM THE REQUIREMENTS DETAILED HEREIN, A LICENSED ENGINEER OR ARCHITECT SHALL PREPARE SITE SPECIFIC DOCUMENTS FOR USE WITH THIS DOCUMENT.

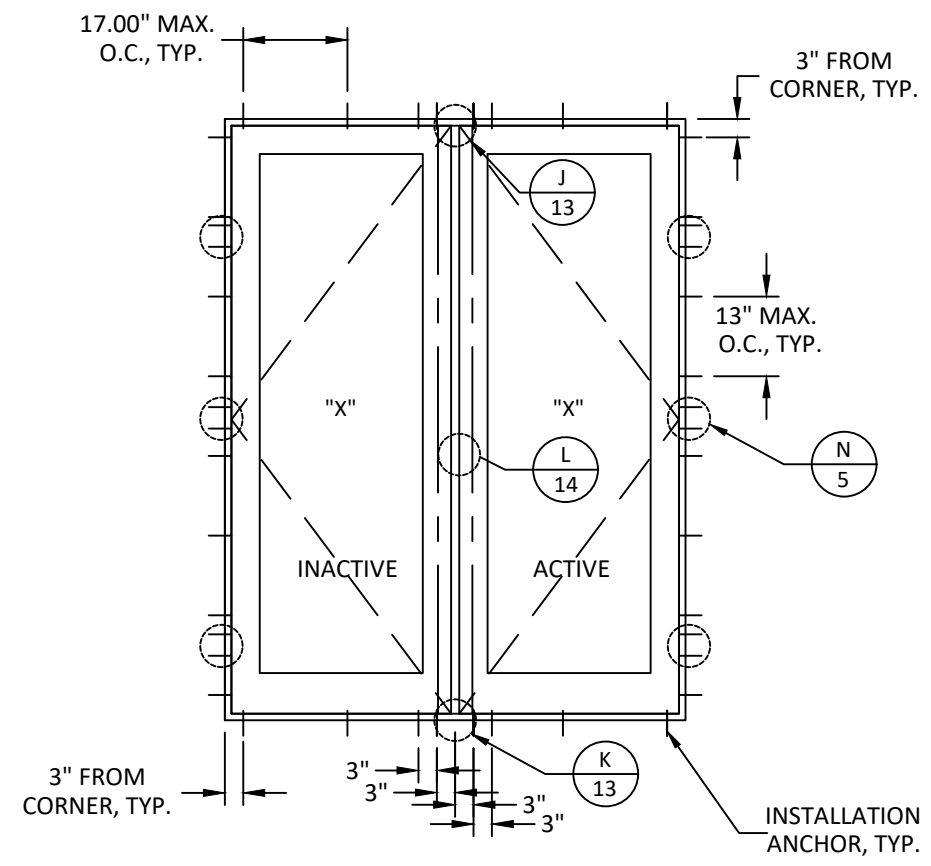


DATE: **06.21.13**
DWG. BY: **ADS** | CHK. BY: **HFN**
SCALE: **NTS**
DWG. #: **JW018**

SHEET
4
OF 14



TYPICAL ELEVATION



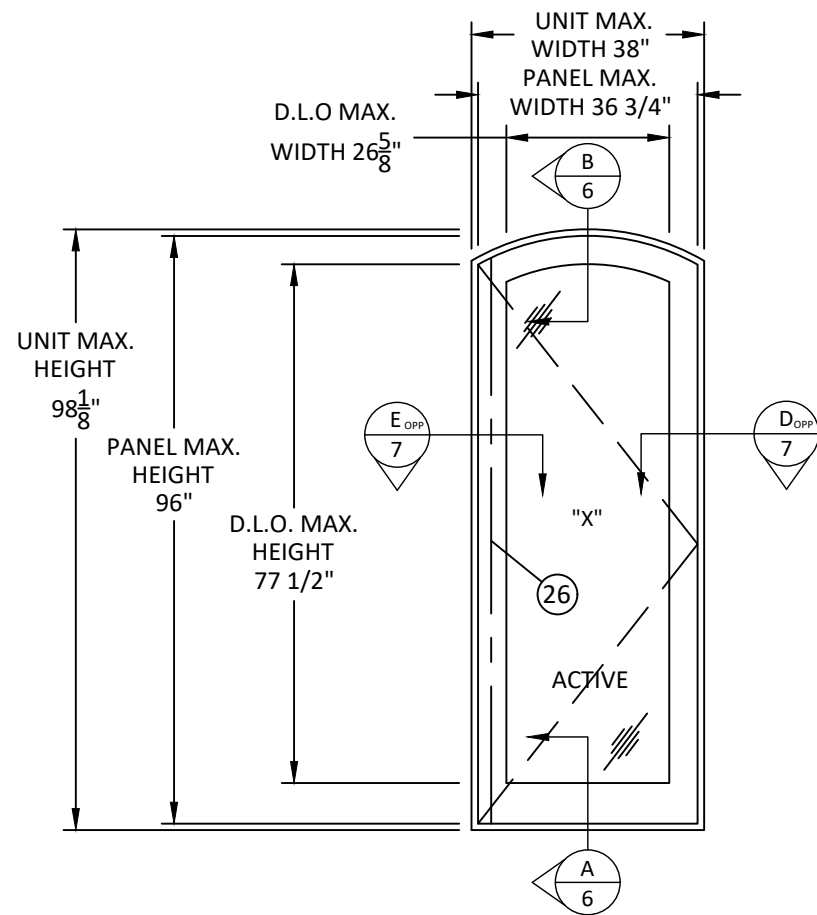
ANCHOR LAYOUT

| CONFIGURATION | UNIT WIDTH | UNIT HEIGHT | DESIGN PRESSURE RATING |
|---------------|------------|-------------|------------------------|
| XX | 75-3/16" | 98-1/8" | +50.0/-50.0 PSF |

- NOTE:
1. PRODUCTS SHOWN HEREIN MEET WATER INFILTRATION REQUIREMENTS BASED UPON POSITIVE PRESSURE RATING.
 2. SEE SHEET 9 FOR GLAZING OPTIONS AND REQUIREMENTS.

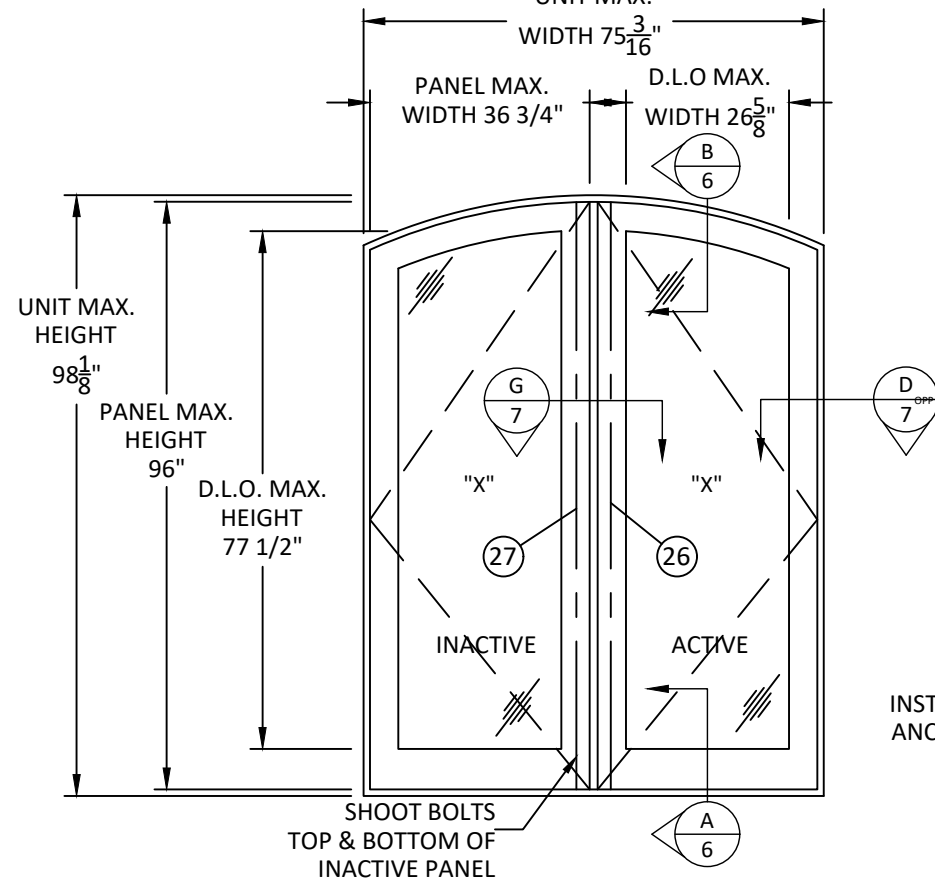
c:\users\luz\desktop\manager\building_drops\projects\jeld-wen\2020-10-22.dwg 10/22/2020 2:10 PM

10/22/2020 2:10 PM



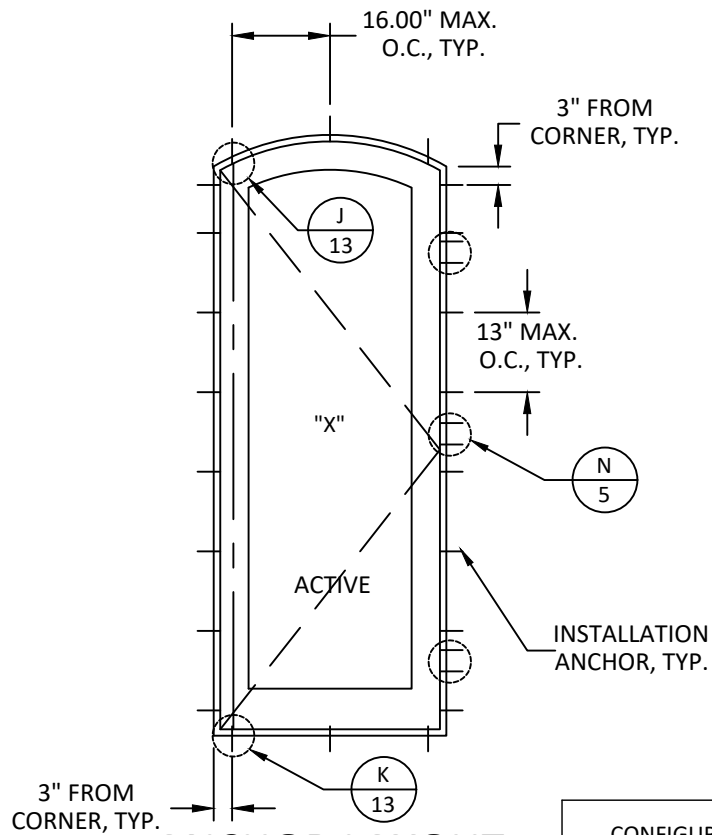
TYPICAL ELEVATION

AS TESTED
UNIT MAX.

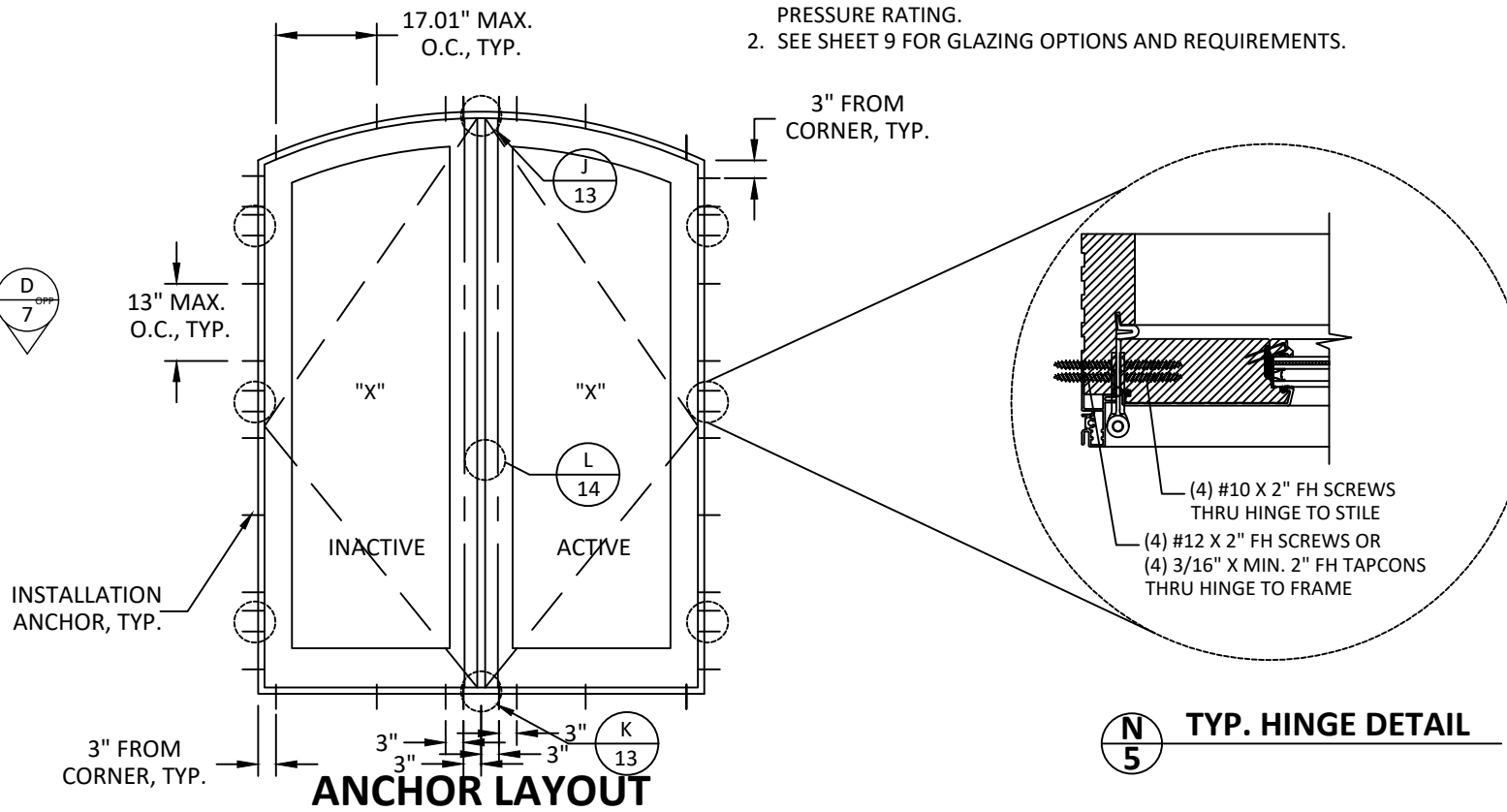


TYPICAL ELEVATION

AS TESTED



ANCHOR LAYOUT



ANCHOR LAYOUT

TYP. HINGE DETAIL

| CONFIGURATION | UNIT WIDTH | UNIT HEIGHT | DESIGN PRESSURE RATING |
|---------------|------------|-------------|------------------------|
| X | 38" | 98-1/8" | +50.0/-50.0 PSF |
| XX | 75-3/16" | 98-1/8" | +50.0/-50.0 PSF |

- NOTE:
1. PRODUCTS SHOWN HEREIN MEET WATER INFILTRATION REQUIREMENTS BASED UPON POSITIVE PRESSURE RATING.
 2. SEE SHEET 9 FOR GLAZING OPTIONS AND REQUIREMENTS.



JELD-WEN, inc.
3737 LAKEPORT BOULEVARD
KLAMATH FALLS, OR 97601
PH: (541) 882-3451 FX: (541) 850-2609

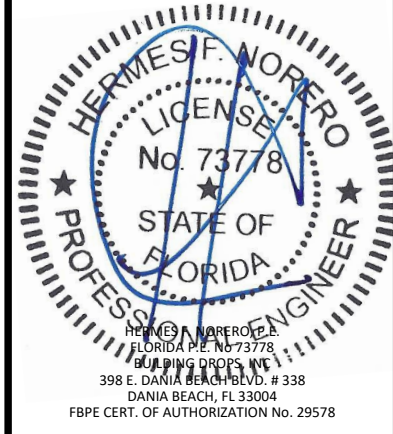
TITLE: CUSTOM CLAD WOOD
OUTSWING DOORS
(NON-HVHZ)/(IMPACT)
ELEVATIONS & ANCHOR LAYOUTS
(4)

PREPARED BY:
BUILDING DROPS, INC.
398 E. DANIA BEACH BLVD., STE. 338
DANIA BEACH, FL 33004
PH: (954) 399-8478
FAX: (954) 744-4738
WEB: www.buildingdrops.com



| REMARKS | BY | DATE |
|---------------------|----|-------|
| 7TH FBC CODE CHANGE | LL | 10/20 |
| | | |
| | | |

THE INSTALLATION DETAILS DESCRIBED HEREIN ARE GENERIC AND MAY NOT REFLECT ACTUAL CONDITIONS FOR A SPECIFIC SITE. IF SITE CONDITIONS CAUSE INSTALLATION TO DEVIATE FROM THE REQUIREMENTS DETAILED HEREIN, A LICENSED ENGINEER OR ARCHITECT SHALL PREPARE SITE SPECIFIC DOCUMENTS FOR USE WITH THIS DOCUMENT.

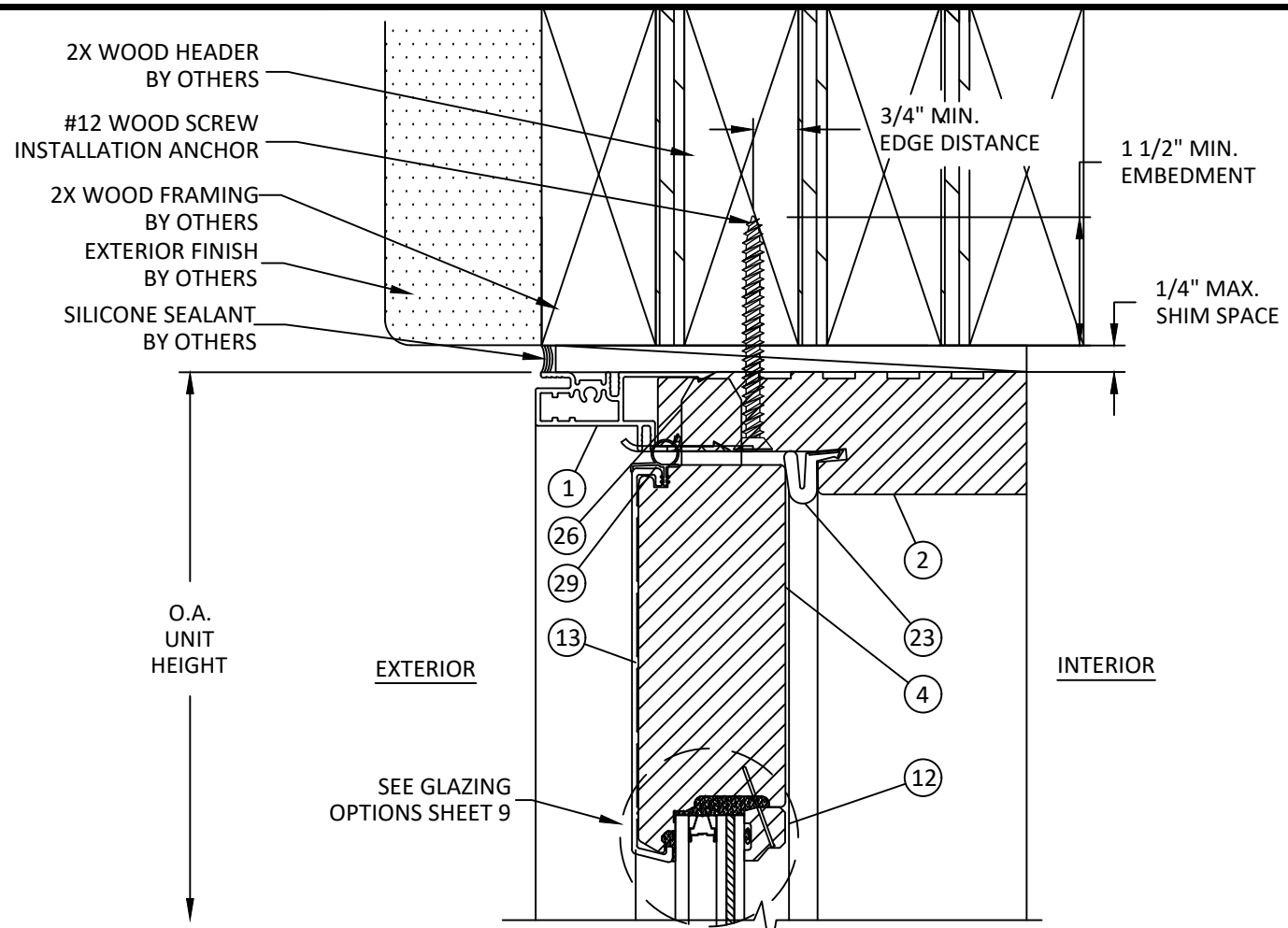


| | | |
|----------|----------|--------------|
| DATE: | 06.21.13 | |
| DWG. BY: | ADS | CHK. BY: HFN |
| SCALE: | NTS | |
| DWG. #: | JW018 | |

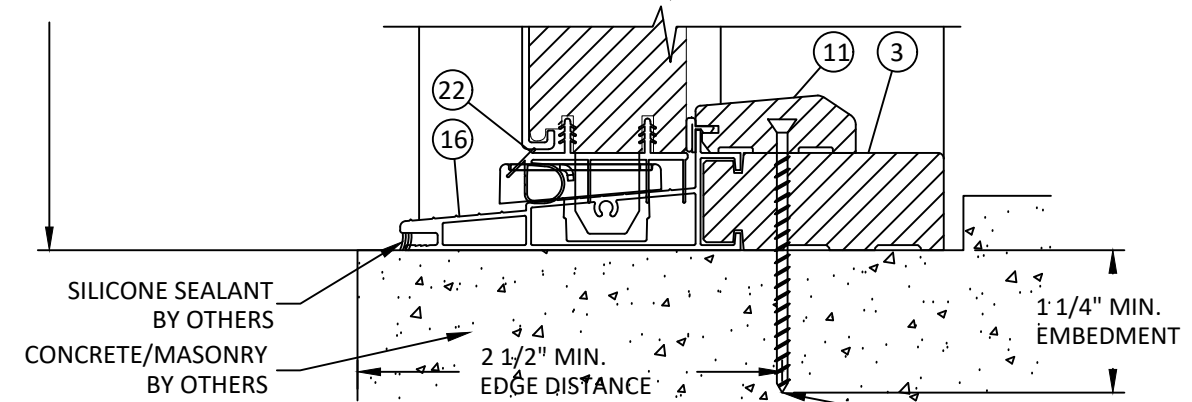
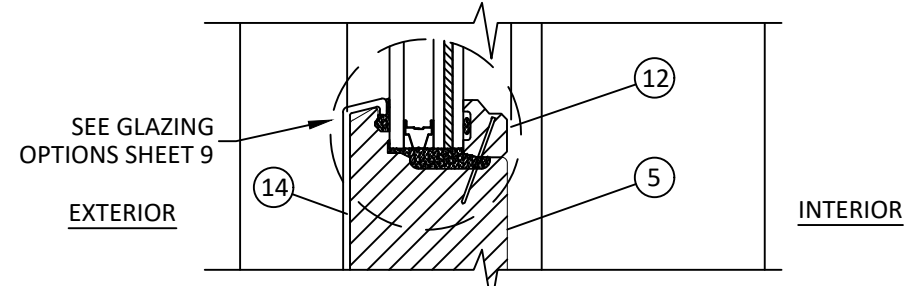
SHEET
5
OF 14

c:\users\luz.lopes\desktop\manager\building_drops\projects\jeld-wen\cc-20-1002\dwgs\jw018 2020-10-22.dwg

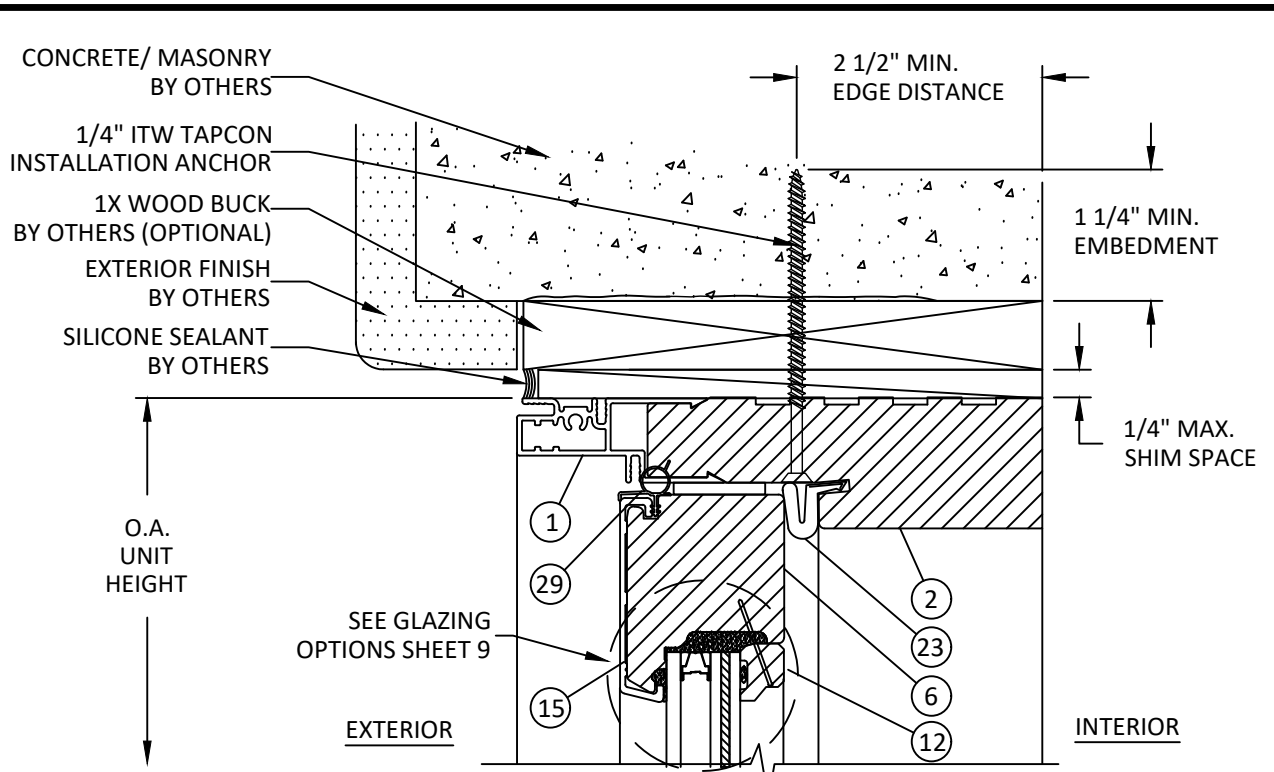
10/22/2020 2:10 PM



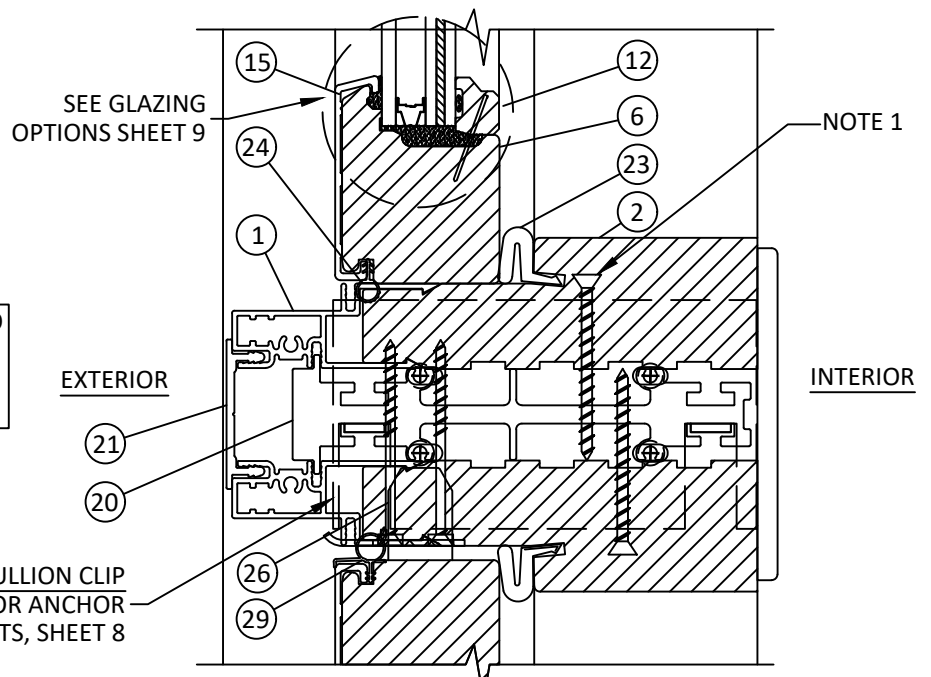
B
6 VERTICAL SECTION
HEAD - 2X WOOD FRAMING
THROUGH FRAME INSTALLATION, TYP.



A
6 VERTICAL SECTION
SILL - CONCRETE/MASONRY
THROUGH FRAME INSTALLATION, TYP.



C
6 VERTICAL SECTION
TRANSOM HEAD - CONCRETE/MASONRY
THROUGH FRAME INSTALLATION, TYP.



D
6 VERTICAL SECTION
HORIZONTAL MULLION, TYP.

NOTE 1: FASTEN DOOR FRAMES TO
MULLIONS USING #10 X 2" FH
WOOD SCREWS AT 14" O.C. MAX.
TYP.

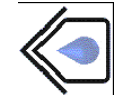
SEE MULLION CLIP
DETAIL FOR ANCHOR
REQUIREMENTS, SHEET 8



JELD-WEN, inc.
3737 LAKEPORT BOULEVARD
KLAMATH FALLS, OR 97601
PH: (541) 882-3451 FX: (541) 850-2609

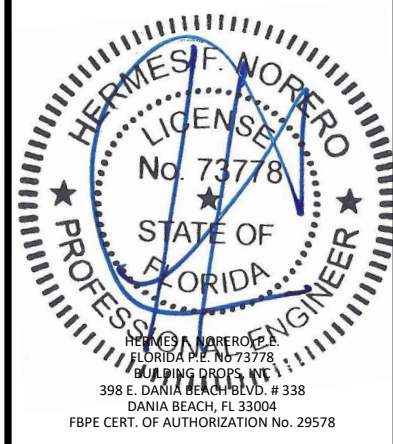
TITLE: CUSTOM CLAD WOOD
OUTSWING DOORS
(NON-HVHZ)/(IMPACT)
VERTICAL SECTIONS

PREPARED BY:
BUILDING DROPS, INC.
398 E. DANIA BEACH BLVD., STE. 338
DANIA BEACH, FL 33004
PH: (954) 959-8478
FAX: (954) 744-4738
WEB: www.buildingdrops.com



| REMARKS | BY | DATE |
|---------------------|----|-------|
| 7TH FBC CODE CHANGE | LL | 10/20 |
| | | |
| | | |

THE INSTALLATION DETAILS DESCRIBED HEREIN ARE GENERIC AND MAY NOT REFLECT ACTUAL CONDITIONS FOR A SPECIFIC SITE. IF SITE CONDITIONS CAUSE INSTALLATION TO DEVIATE FROM THE REQUIREMENTS DETAILED HEREIN, A LICENSED ENGINEER OR ARCHITECT SHALL PREPARE SITE SPECIFIC DOCUMENTS FOR USE WITH THIS DOCUMENT.



DATE: 06.21.13

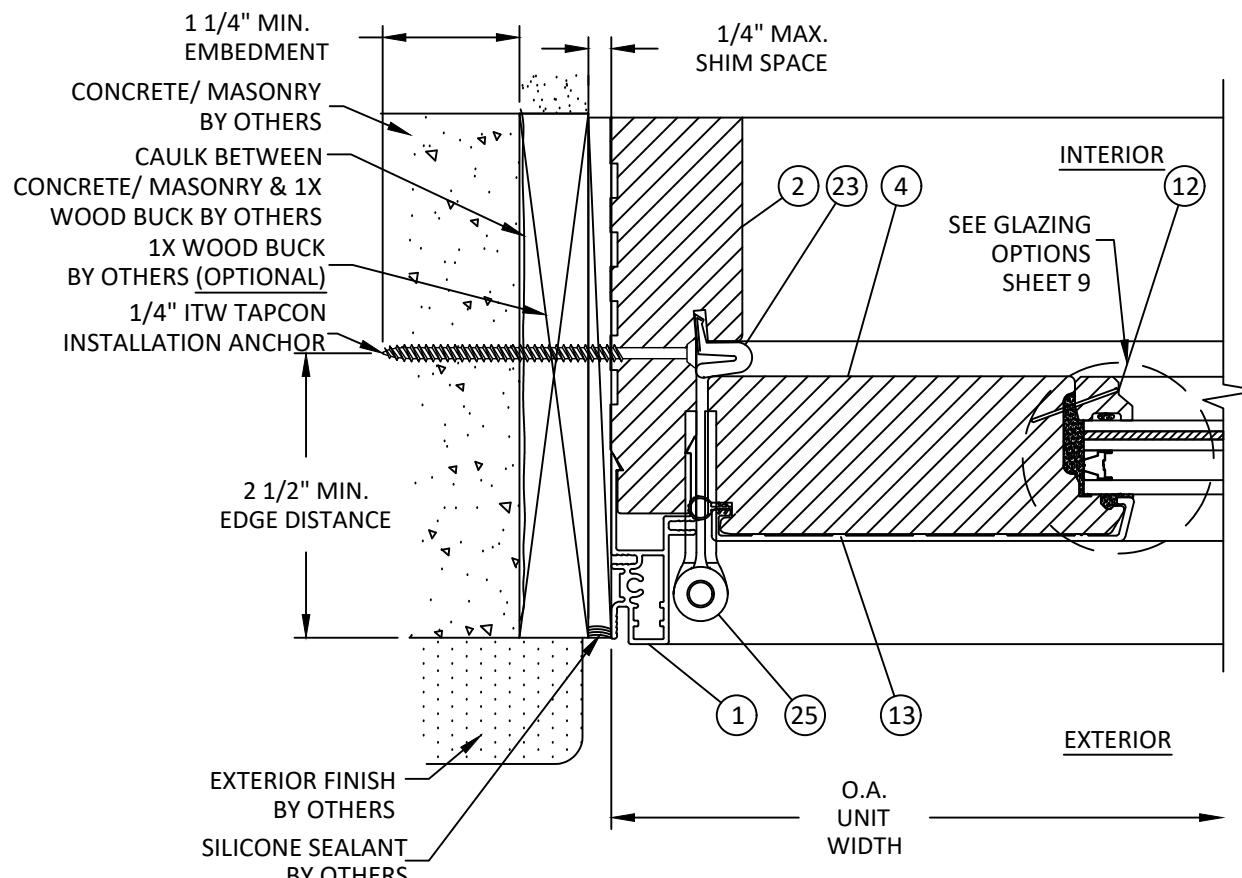
DWG. BY: ADS
CHK. BY: HFN

SCALE: NTS

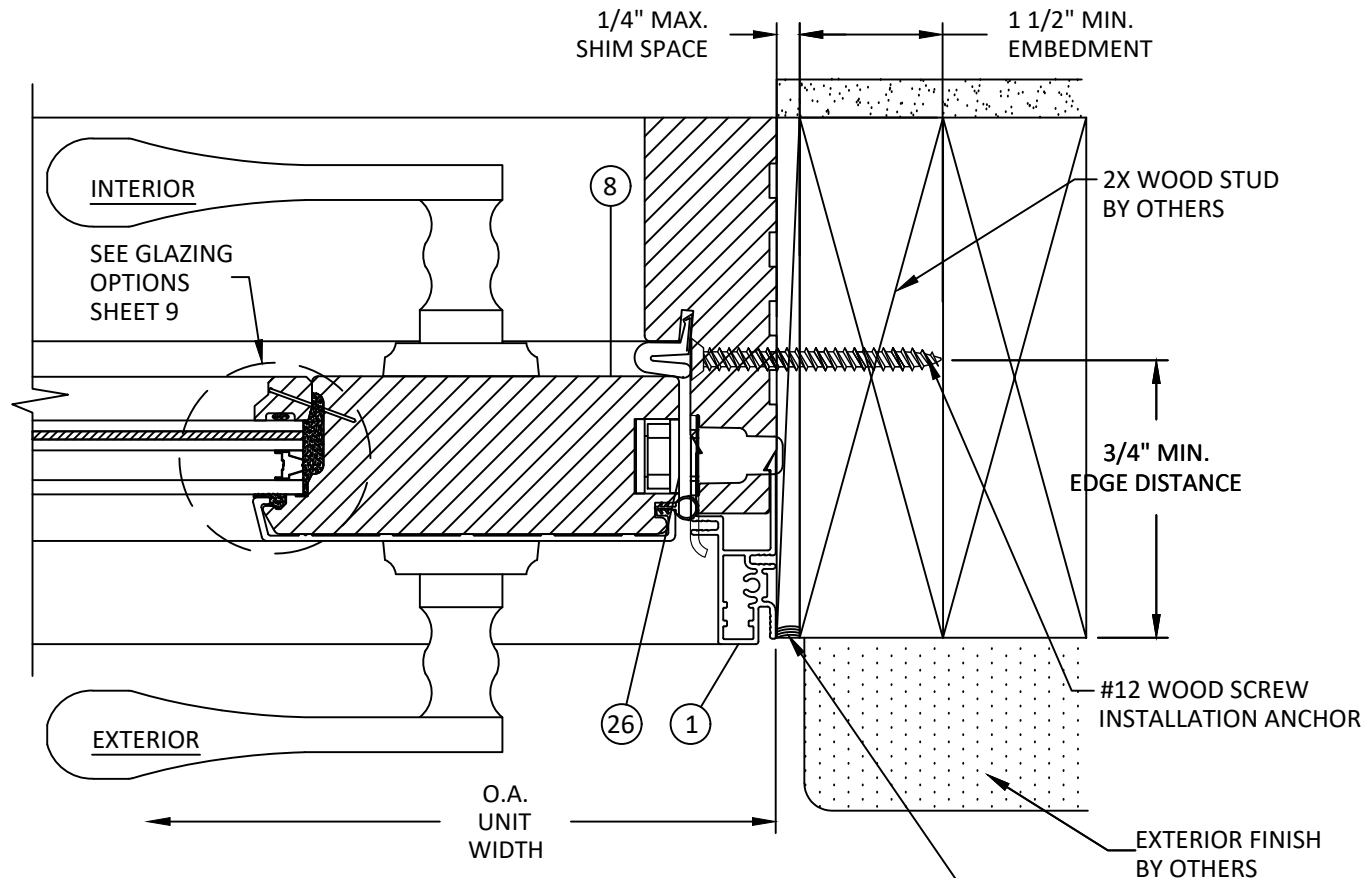
DWG. #: JW018

SHEET
6

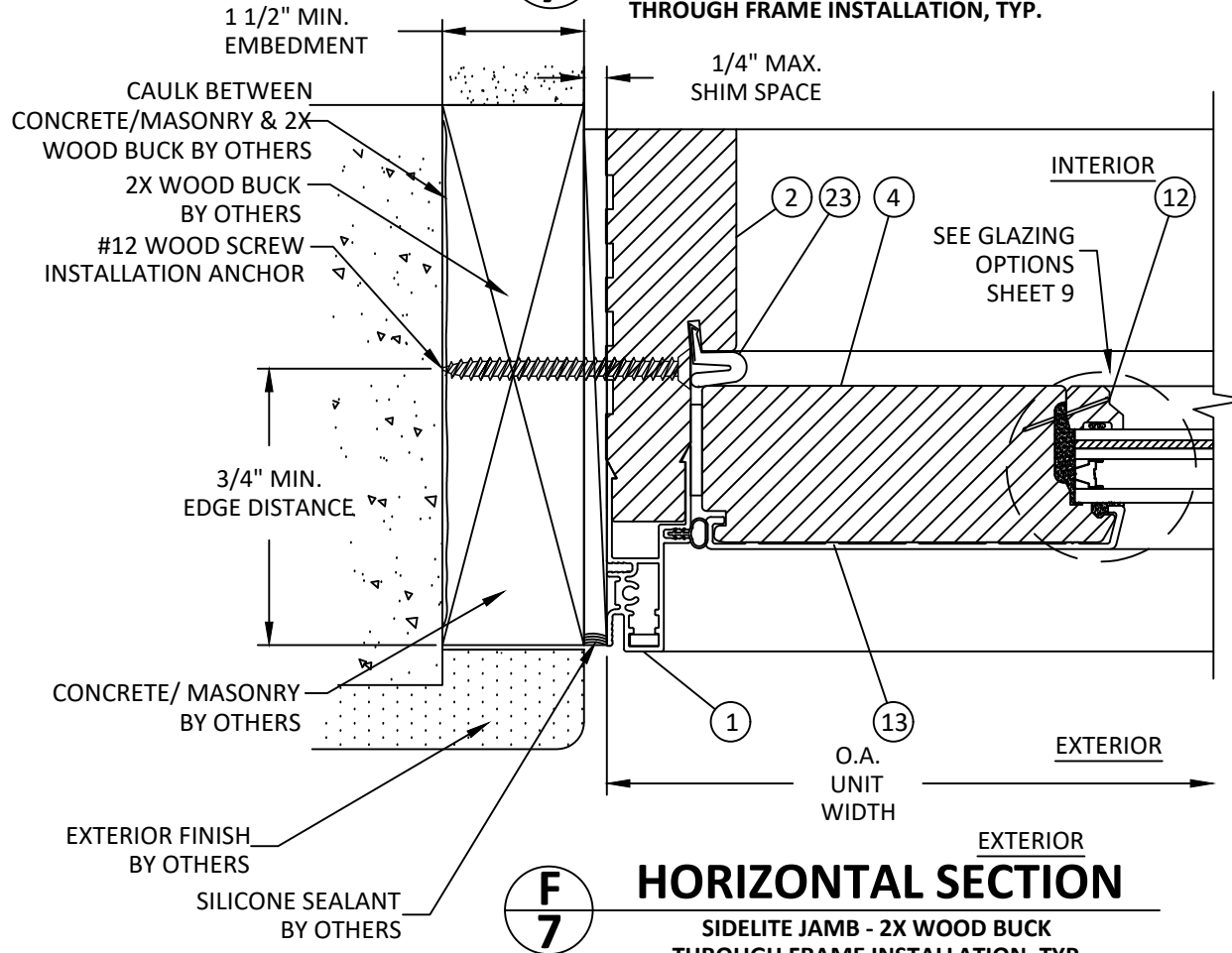
10/22/2020 2:10 PM
 c:\users\luz_lopez\desktop\manager\building_drops\projects\jeld-wen\cc-20-1002\dwg\jw018_2020-10-22.dwg



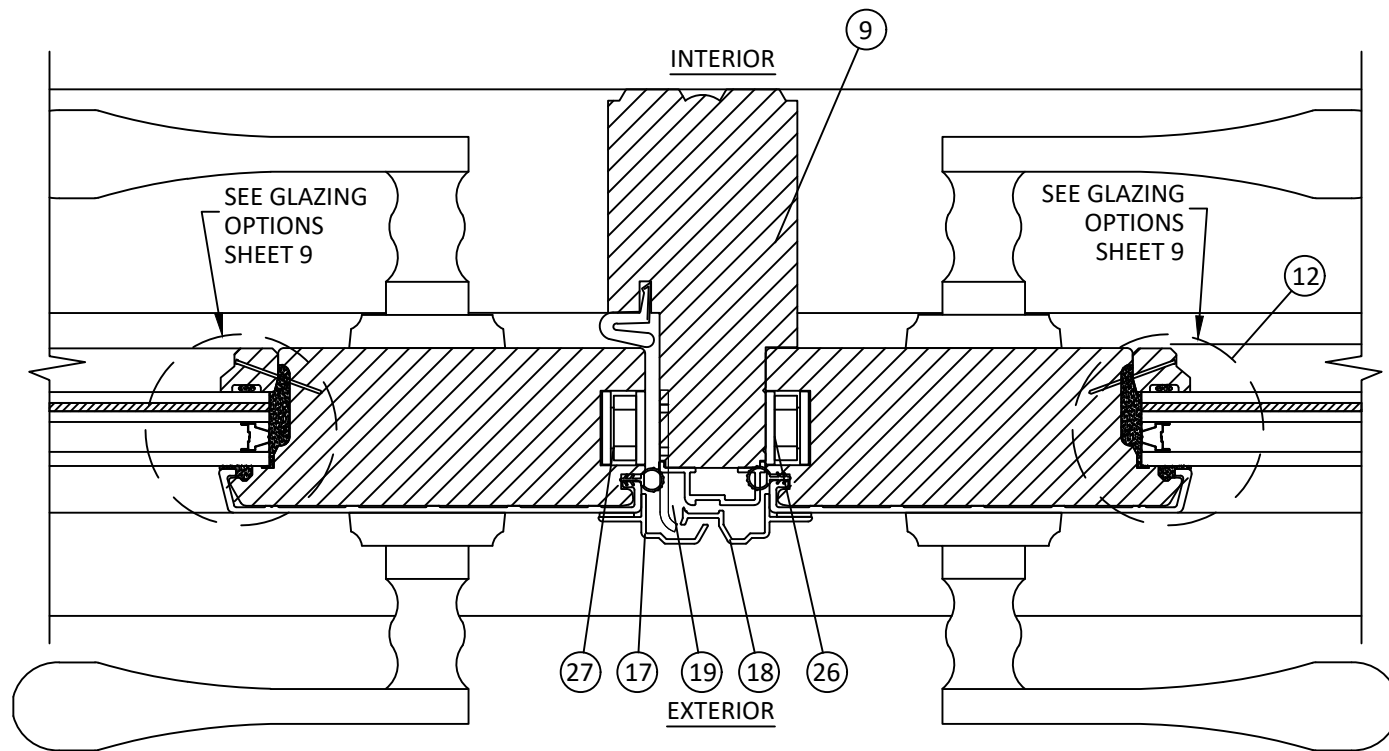
D HORIZONTAL SECTION
7 HINGE JAMB-CONCRETE/MASONRY THROUGH FRAME INSTALLATION, TYP.



E HORIZONTAL SECTION
7 LOCK JAMB-2X WOOD BUCK THROUGH FRAME INSTALLATION, TYP.



F HORIZONTAL SECTION
7 SIDELITE JAMB - 2X WOOD BUCK THROUGH FRAME INSTALLATION, TYP.



G HORIZONTAL SECTION
7 ASTRAGAL

JELD-WEN
 WINDOWS & DOORS

JELD-WEN, inc.
 3737 LAKEPORT BOULEVARD
 KLAMATH FALLS, OR 97601
 PH: (541) 882-3451 FX: (541) 850-2609

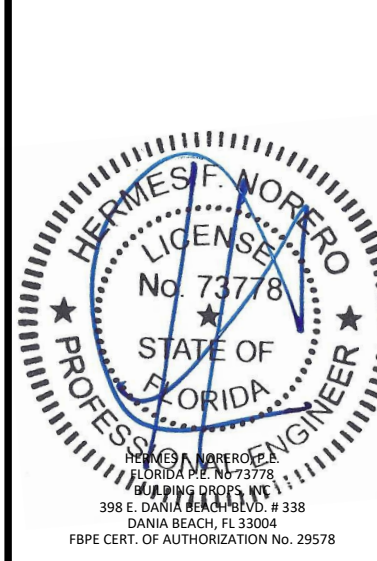
TITLE: CUSTOM CLAD WOOD
 OUTSWING DOORS
 (NON-HVHZ)/(IMPACT)

HORIZONTAL SECTIONS

PREPARED BY:
BUILDING DROPS, INC.
 398 E. DANIA BEACH BLVD., STE. 338
 DANIA BEACH, FL 33004
 PH: (954) 999-8478
 FAX: (954) 744-4738
 WEB: www.buildingdrops.com

| REMARKS | BY | DATE |
|---------------------|----|-------|
| 7TH FBC CODE CHANGE | LL | 10/20 |
| | | |
| | | |

THE INSTALLATION DETAILS DESCRIBED HEREIN ARE GENERIC AND MAY NOT REFLECT ACTUAL CONDITIONS FOR A SPECIFIC SITE. IF SITE CONDITIONS CAUSE INSTALLATION TO DEVIATE FROM THE REQUIREMENTS DETAILED HEREIN, A LICENSED ENGINEER OR ARCHITECT SHALL PREPARE SITE SPECIFIC DOCUMENTS FOR USE WITH THIS DOCUMENT.



DATE: **06.21.13**

DWG. BY: **ADS** CHK. BY: **HFN**

SCALE: **NTS**

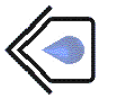
DWG. #: **JW018**

SHEET
7
 OF 14

10/22/2020 2:10 PM

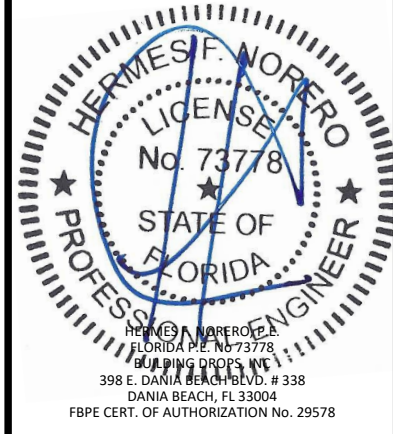
TITLE: CUSTOM CLAD WOOD
OUTSWING DOORS
(NON-HVHZ)/(IMPACT)
HORIZONTAL SECTIONS
& MULLION CLIP DETAIL

PREPARED BY:
BUILDING DROPS, INC.
398 E. DANIA BEACH BLVD., STE. 338
DANIA BEACH, FL 33004
PH: (954) 959-8478
FAX: (954) 744-4738
WEB: www.buildingdrops.com



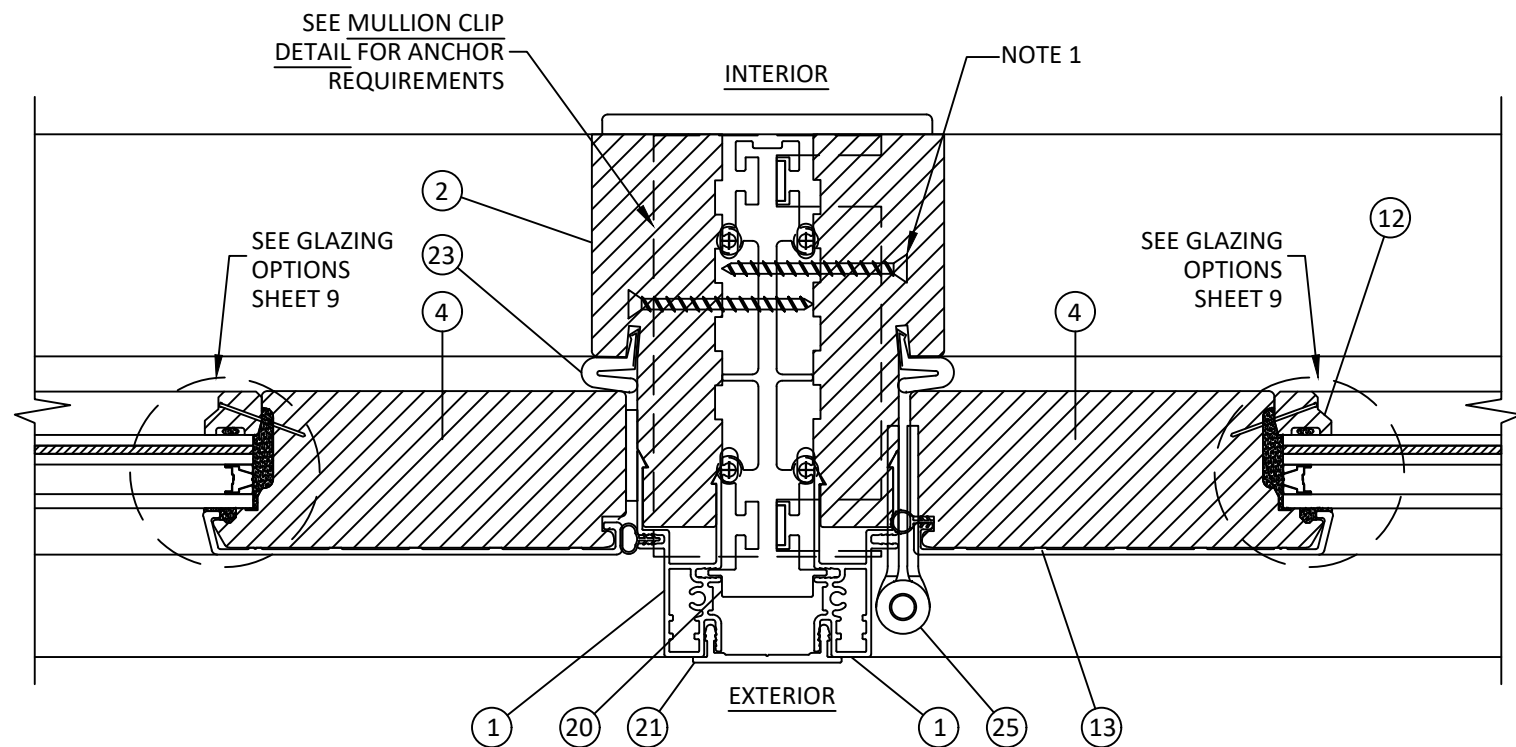
| REMARKS | BY | DATE |
|---------------------|----|-------|
| 7TH FBC CODE CHANGE | LL | 10/20 |
| | | |
| | | |

THE INSTALLATION DETAILS DESCRIBED HEREIN ARE GENERIC AND MAY NOT REFLECT ACTUAL CONDITIONS FOR A SPECIFIC SITE. IF SITE CONDITIONS CAUSE INSTALLATION TO DEVIATE FROM THE REQUIREMENTS DETAILED HEREIN, A LICENSED ENGINEER OR ARCHITECT SHALL PREPARE SITE SPECIFIC DOCUMENTS FOR USE WITH THIS DOCUMENT.



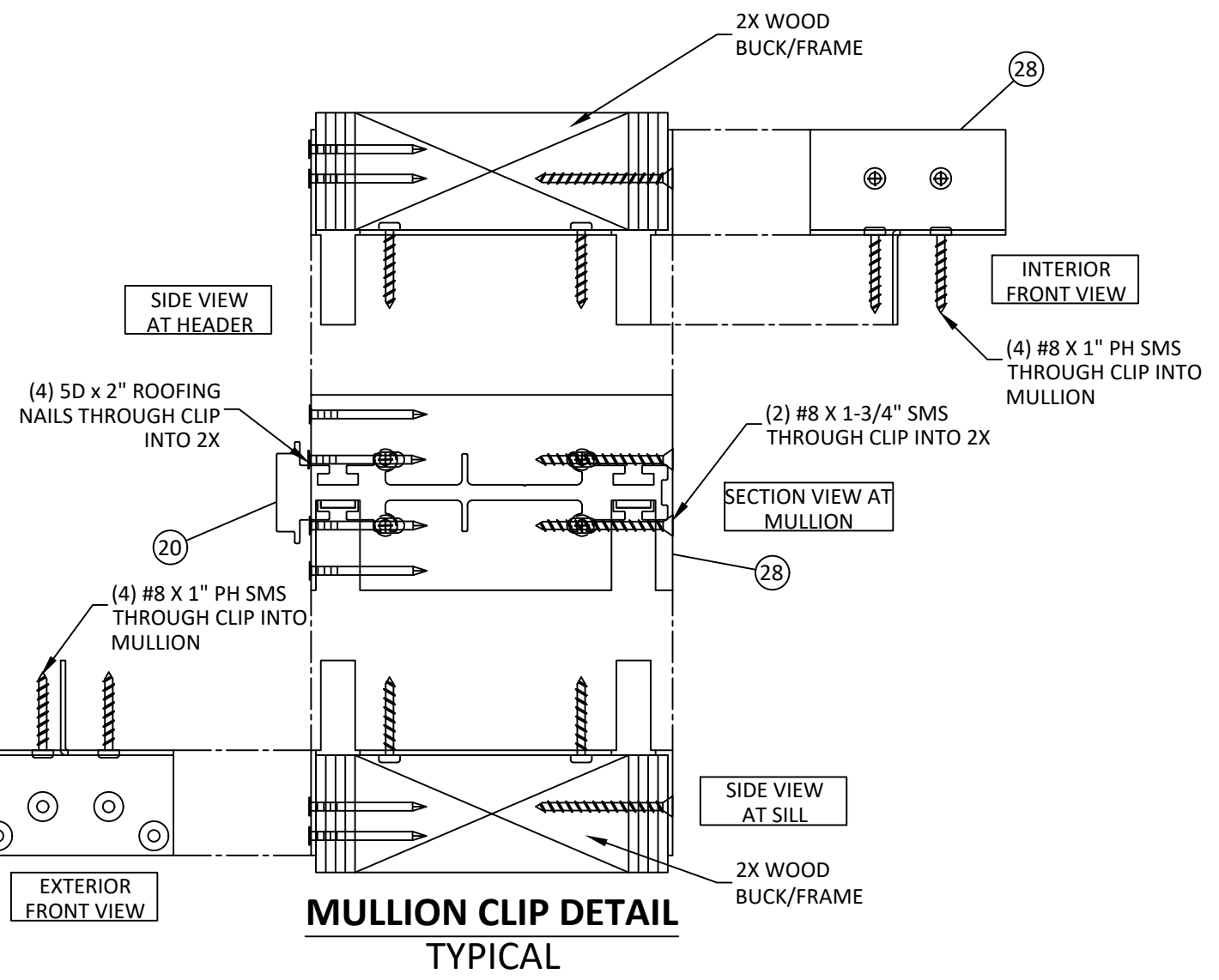
| | | |
|----------|----------|--------------|
| DATE: | 06.21.13 | |
| DWG. BY: | ADS | CHK. BY: HFN |
| SCALE: | NTS | |
| DWG. #: | JW018 | |

SHEET
8
OF 14

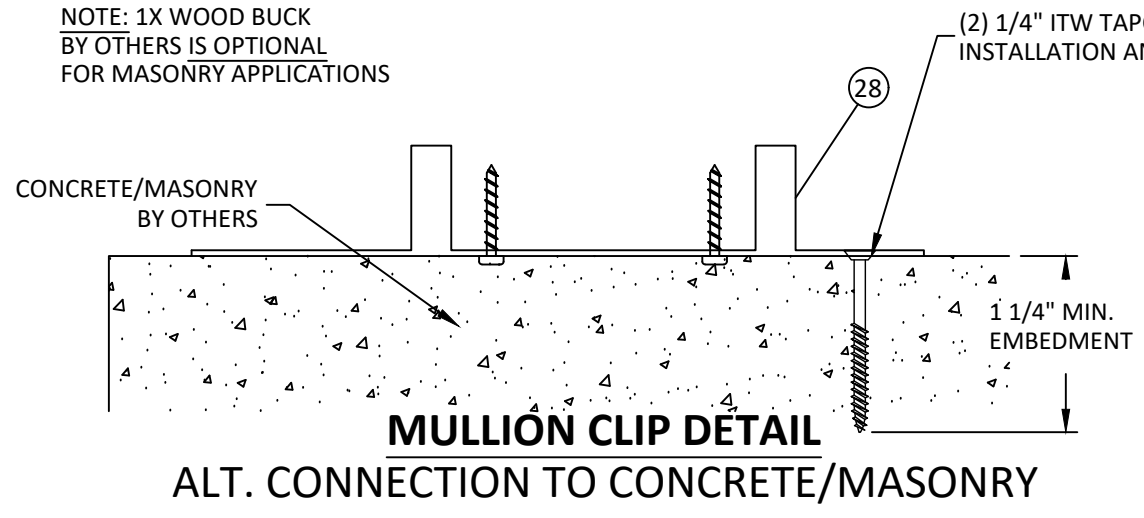


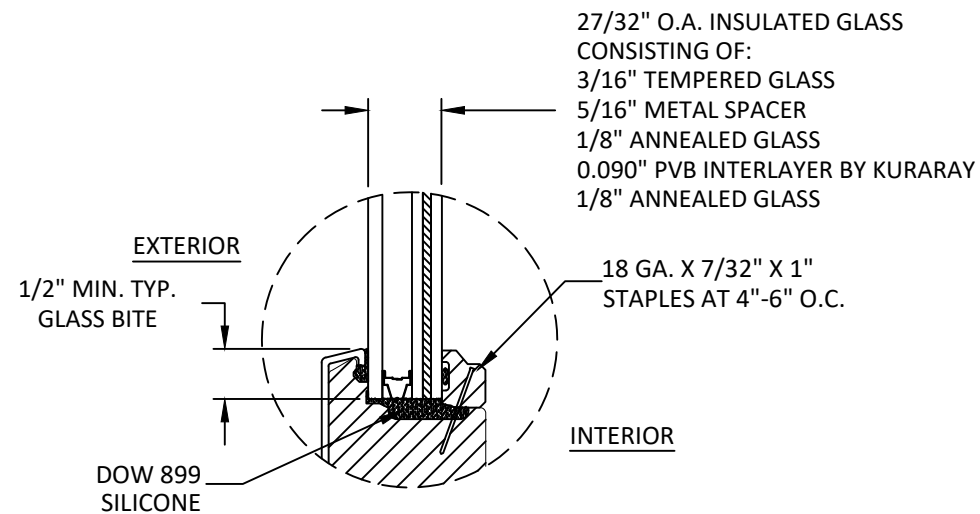
NOTE 1: FASTEN DOOR FRAMES TO MULLIONS USING #10 X 2" FH WOOD SCREWS AT 14" O.C. MAX. TYP.

H
8 **HORIZONTAL SECTION**
VERTICAL MULLION, TYP.

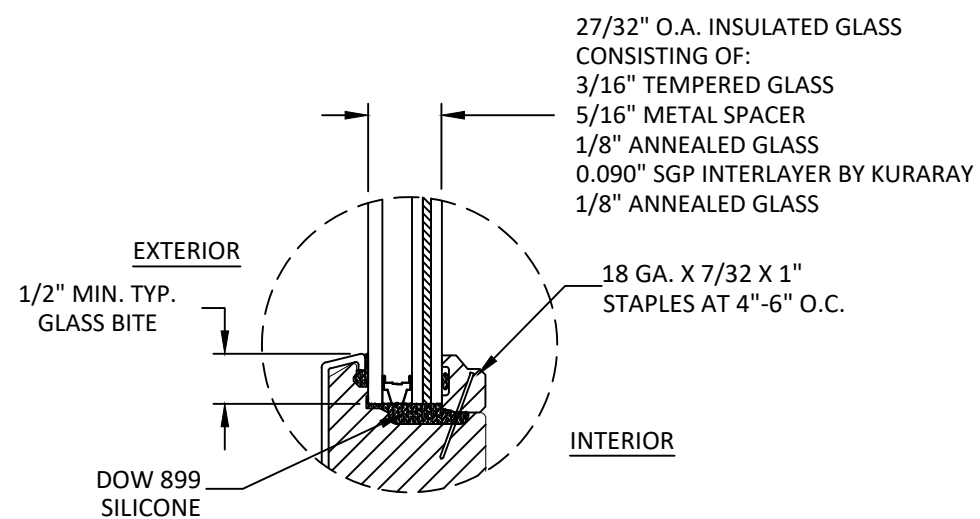


NOTE: 1X WOOD BUCK BY OTHERS IS OPTIONAL FOR MASONRY APPLICATIONS





GLAZING DETAIL 1

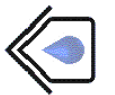


GLAZING DETAIL 2

TITLE: CUSTOM CLAD WOOD
OUTSWING DOORS
(NON-HVHZ)/(IMPACT)

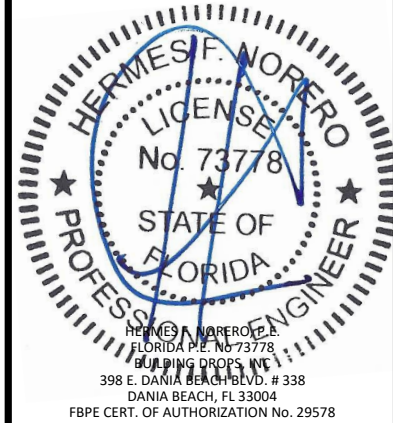
GLAZING DETAILS

PREPARED BY:
BUILDING DROPS, INC.
398 E. DANIA BEACH BLVD., STE. 338
DANIA BEACH, FL 33004
PH: (954) 999-8478
FAX: (954) 744-4738
WEB: www.buildingdrops.com



| REMARKS | BY | DATE |
|---------------------|----|-------|
| 7TH FBC CODE CHANGE | LL | 10/20 |
| | | |
| | | |

THE INSTALLATION DETAILS DESCRIBED HEREIN ARE GENERIC AND MAY NOT REFLECT ACTUAL CONDITIONS FOR A SPECIFIC SITE. IF SITE CONDITIONS CAUSE INSTALLATION TO DEVIATE FROM THE REQUIREMENTS DETAILED HEREIN, A LICENSED ENGINEER OR ARCHITECT SHALL PREPARE SITE SPECIFIC DOCUMENTS FOR USE WITH THIS DOCUMENT.



| | |
|----------|----------|
| DATE: | 06.21.13 |
| DWG. BY: | CHK. BY: |
| ADS | HFN |
| SCALE: | NTS |
| DWG. #: | JW018 |

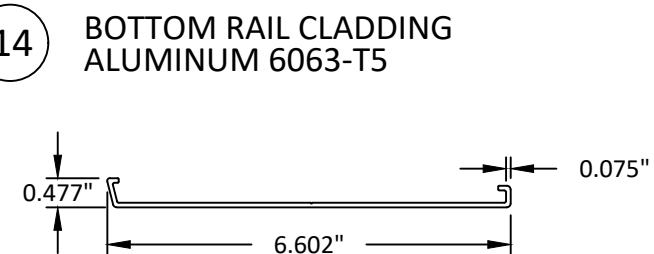
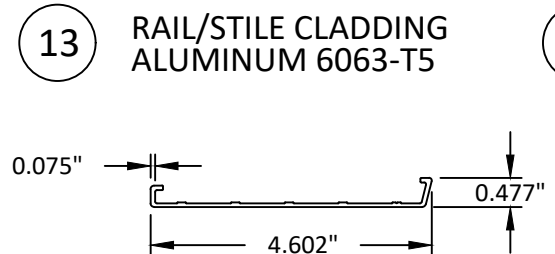
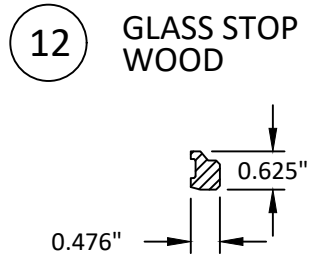
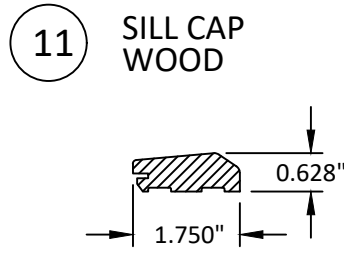
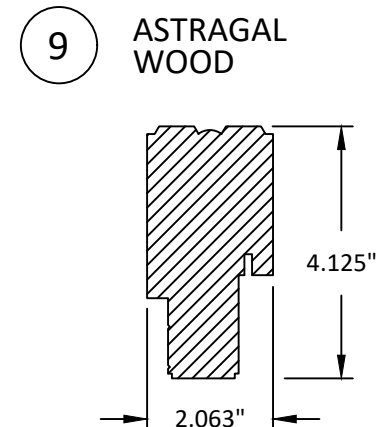
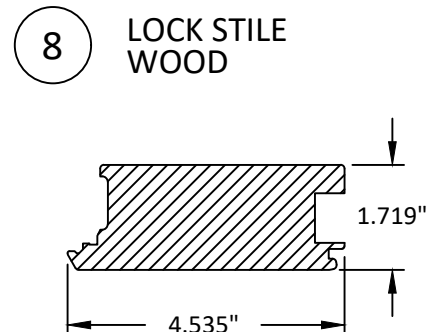
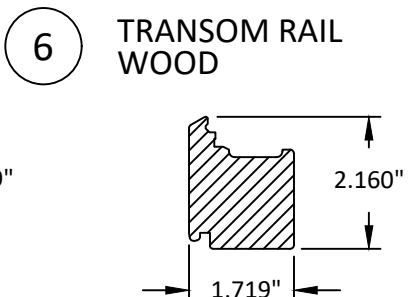
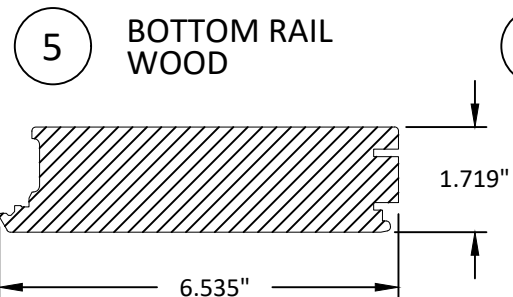
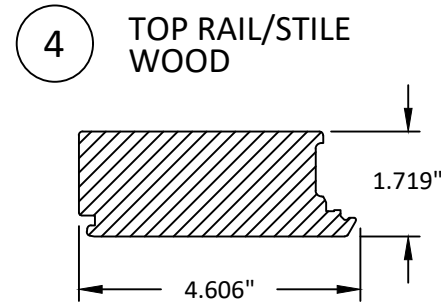
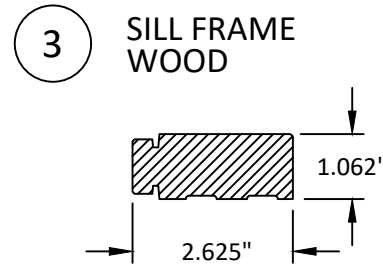
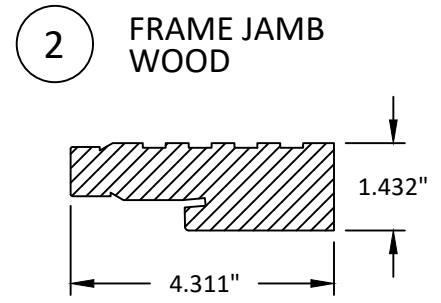
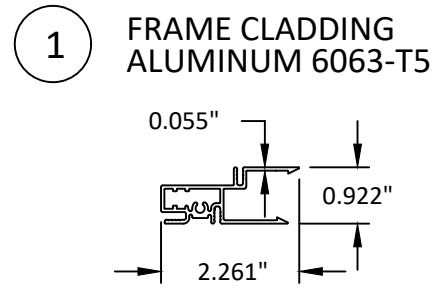
SHEET
9
OF 14

10/22/2020 2:10 PM

BILL OF MATERIALS

| ITEM NO. | DESCRIPTION | PART NUMBER | MATERIAL | MANUFACTURER |
|----------|---------------------------------|-------------|-------------|--------------|
| 1 | FRAME CLADDING | --- | ALUMINUM | JELD-WEN |
| 2 | FRAME JAMB | --- | WOOD | JELD-WEN |
| 3 | SILL FRAME | --- | WOOD | JELD-WEN |
| 4 | TOP RAIL/STILE | --- | WOOD | JELD-WEN |
| 5 | BOTTOM RAIL | --- | WOOD | JELD-WEN |
| 6 | TRANSOM RAIL | --- | WOOD | JELD-WEN |
| 7 | RAIL/STILE | --- | WOOD | JELD-WEN |
| 8 | LOCK STILE | --- | WOOD | JELD-WEN |
| 9 | ASTRAGAL | --- | WOOD | JELD-WEN |
| 10 | NOT USED | --- | --- | --- |
| 11 | SILL CAP | --- | WOOD | JELD-WEN |
| 12 | GLASS STOP | --- | WOOD | JELD-WEN |
| 13 | RAIL/STILE CLADDING | --- | ALUMINUM | JELD-WEN |
| 14 | BOTTOM RAIL CLADDING | --- | ALUMINUM | JELD-WEN |
| 15 | TRANSOM RAIL CLADDING | --- | ALUMINUM | JELD-WEN |
| 16 | SILL CLADDING | --- | ALUMINUM | JELD-WEN |
| 17 | INACTIVE ASTRAGAL ADAPTOR | --- | ALUMINUM | JELD-WEN |
| 18 | ACTIVE ASTRAGAL ADAPTOR | --- | ALUMINUM | JELD-WEN |
| 19 | ASTRAGAL CLADDING | --- | ALUMINUM | JELD-WEN |
| 20 | MULLION | --- | ALUMINUM | JELD-WEN |
| 21 | MULLION CAP | --- | ALUMINUM | JELD-WEN |
| 22 | DOOR SWEEP | --- | VINYL | INTEK |
| 23 | WEATHERSTRIPPING | --- | FOAM | SCHLEGEL |
| 24 | BULB GASKET | --- | VINYL | INTEK |
| 25 | HINGE (3 PER PANEL, SEE DETAIL) | --- | SS | JELD-WEN |
| 26 | MULTIPOINT LOCK | --- | SS | ASHLAND |
| 27 | SHOOT BOLTS | --- | SS | ASHLAND |
| 28 | MULLION CLIP | --- | GALV. STEEL | JELD-WEN |
| 29 | HEAD PANEL BULB GASKET | --- | VINYL | AMESBURY |

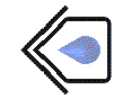
NOTE: ALL WOOD COMPONENTS ARE PRESSURE TREATED PINE.



JELD-WEN, inc.
3737 LAKEPORT BOULEVARD
KLAMATH FALLS, OR 97601
PH: (541) 882-3451 FX: (541) 850-2609

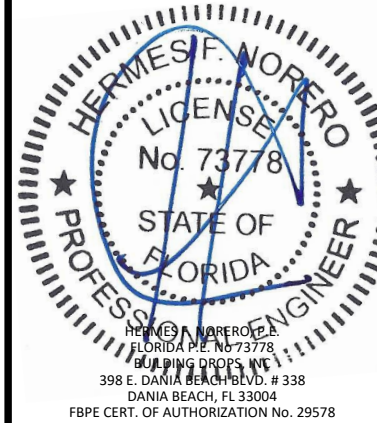
TITLE: CUSTOM CLAD WOOD
OUTSWING DOORS
(NON-HVHZ)/(IMPACT)
COMPONENTS
& BILL OF MATERIALS

PREPARED BY:
BUILDING DROPS, INC.
398 E. DANIA BEACH BLVD., STE. 338
DANIA BEACH, FL 33004
PH: (954) 959-8478
FAX: (954) 744-4738
WEB: www.buildingdrops.com



| REMARKS | BY | DATE |
|---------------------|----|-------|
| 7TH FBC CODE CHANGE | LL | 10/20 |
| | | |
| | | |

THE INSTALLATION DETAILS DESCRIBED HEREIN ARE GENERIC AND MAY NOT REFLECT ACTUAL CONDITIONS FOR A SPECIFIC SITE. IF SITE CONDITIONS CAUSE INSTALLATION TO DEVIATE FROM THE REQUIREMENTS DETAILED HEREIN, A LICENSED ENGINEER OR ARCHITECT SHALL PREPARE SITE SPECIFIC DOCUMENTS FOR USE WITH THIS DOCUMENT.

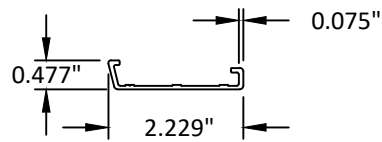


| | |
|----------|----------|
| DATE: | 06.21.13 |
| DWG. BY: | ADS |
| CHK. BY: | HFN |
| SCALE: | NTS |
| DWG. #: | JW018 |
| SHEET | 10 |

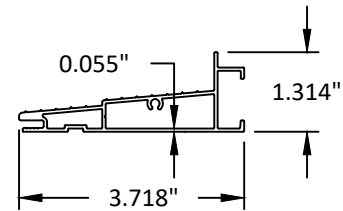
c:\users\luz_lopez\desktop\manager\building_drops\projects\jeld-wen\vc-20-1002\dwgs\jw018_2020-10-22.dwg

10/22/2020 2:10 PM

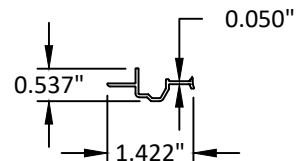
15 TRANSOM RAIL CLADDING ALUMINUM 6063-T5



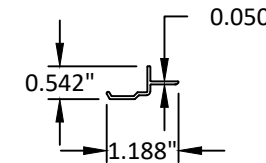
16 SILL CLADDING ALUMINUM 6063-T5



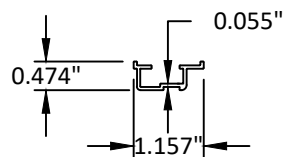
17 INACTIVE ASTRAGAL ADAPTOR ALUMINUM 6063-T5



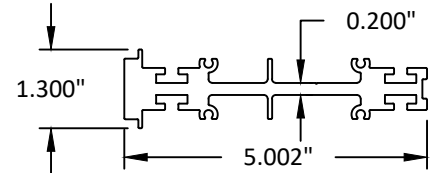
18 ACTIVE ASTRAGAL ADAPTOR ALUMINUM 6063-T5



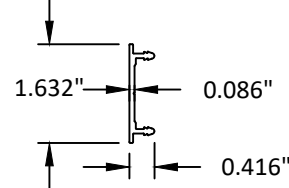
19 ASTRAGAL CLADDING ALUMINUM 6063-T5



20 MULLION ALUMINUM 6063-T5



21 MULLION CAP ALUMINUM 6063-T5



22 DOOR SWEEP VINYL



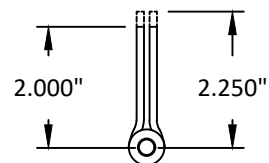
23 WEATHERSTRIPPING FOAM



24 BULB GASKET VINYL



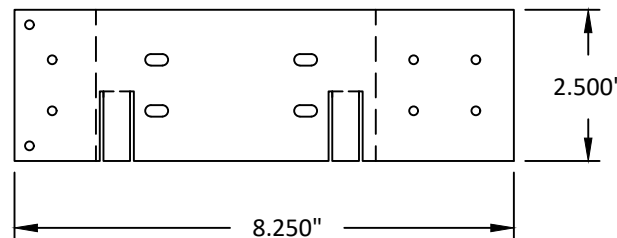
25 HINGE SS



QUALIFIED HINGES:

- 4" BUTT HINGE
- 4-1/2" BUTT HINGE
- 4" ADJUSTABLE HINGE

28 MULLION CLIP 0.070" THK. GALV. STEEL



29 HEAD PANEL BULB GASKET VINYL



TITLE: CUSTOM CLAD WOOD
OUTSWING DOORS
(NON-HVHZ)/(IMPACT)

COMPONENTS

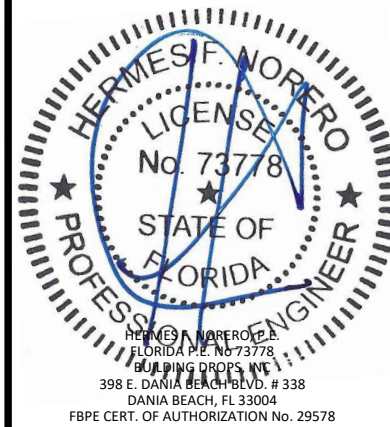
PREPARED BY:

BUILDING DROPS, INC.
398 E. DANIA BEACH BLVD., STE. 338
DANIA BEACH, FL 33004
PH: (954) 999-8478
FAX: (954) 744-4738
WEB: www.buildingdrops.com



| REMARKS | BY | DATE |
|---------------------|----|-------|
| 7TH FBC CODE CHANGE | LL | 10/20 |
| | | |
| | | |

THE INSTALLATION DETAILS DESCRIBED HEREIN ARE GENERIC AND MAY NOT REFLECT ACTUAL CONDITIONS FOR A SPECIFIC SITE. IF SITE CONDITIONS CAUSE INSTALLATION TO DEVIATE FROM THE REQUIREMENTS DETAILED HEREIN, A LICENSED ENGINEER OR ARCHITECT SHALL PREPARE SITE SPECIFIC DOCUMENTS FOR USE WITH THIS DOCUMENT.



DATE: 06.21.13

DWG. BY: ADS
CHK. BY: HFN

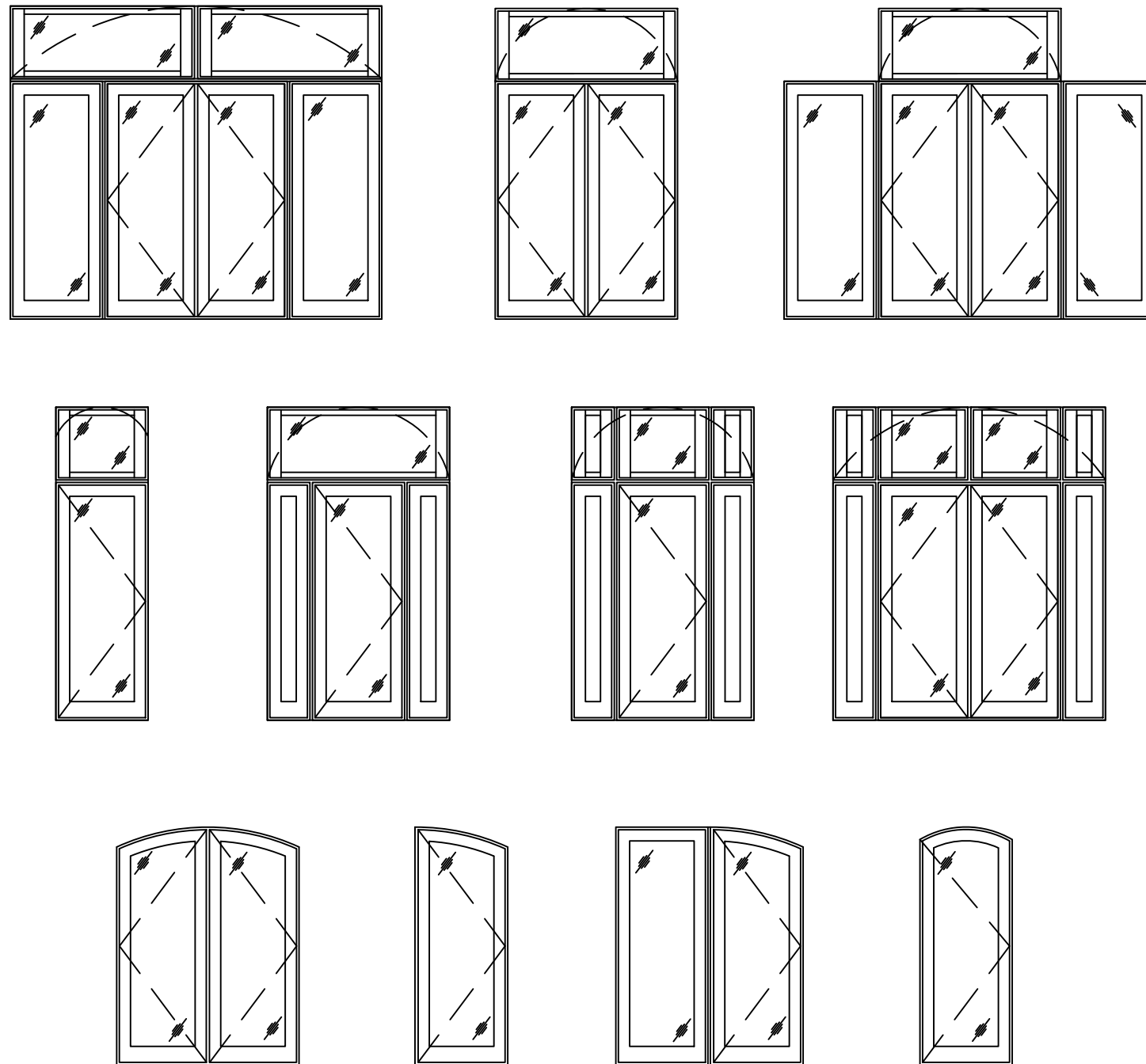
SCALE: NTS

DWG. #: JW018

SHEET
11

c:\users\luz_lopez\desktop\manager\building_drops\projects\jeld-wen\cc-20-1002\dwgs\jw018_2020-10-22.dwg

TYPICAL QUALIFIED CONFIGURATIONS



- NOTES:**
1. CONFIGURATIONS SHOWN ARE TYPICAL AND FOR ILLUSTRATION PURPOSES ONLY.
 2. ALL QUALIFIED CONFIGURATIONS SHALL ADHERE TO THE MAXIMUM LISTED SIZES AND PRESSURES IN THIS APPROVAL.
 3. ARCHED UNITS ARE ALLOWABLE AND SHALL BE INSCRIBED INTO THE MAXIMUM RECTANGULAR AREA LISTED IN THE APPROVAL.



JELD-WEN, inc.
3737 LAKEPORT BOULEVARD
KLAMATH FALLS, OR 97601
PH: (541) 882-3451 FX: (541) 850-2609

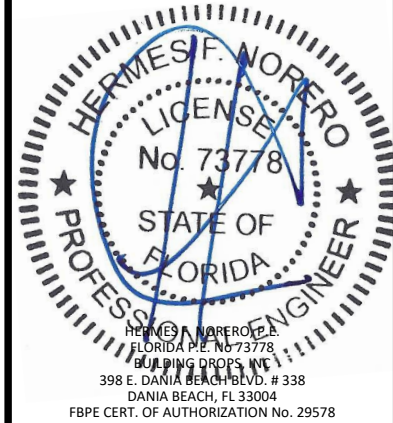
TITLE: CUSTOM CLAD WOOD
OUTSWING DOORS
(NON-HVHZ)/(IMPACT)
TYP. QUALIFIED
CONFIGURATIONS

PREPARED BY:

BUILDING DROPS, INC.
398 E. DANIA BEACH BLVD., STE. 338
DANIA BEACH, FL 33004
PH: (954) 999-8478
FAX: (954) 744-4738
WEB: www.buildingdrops.com

| REMARKS | BY | DATE |
|---------------------|----|-------|
| 7TH FBC CODE CHANGE | LL | 10/20 |
| | | |
| | | |

THE INSTALLATION DETAILS DESCRIBED HEREIN ARE GENERIC AND MAY NOT REFLECT ACTUAL CONDITIONS FOR A SPECIFIC SITE. IF SITE CONDITIONS CAUSE INSTALLATION TO DEVIATE FROM THE REQUIREMENTS DETAILED HEREIN, A LICENSED ENGINEER OR ARCHITECT SHALL PREPARE SITE SPECIFIC DOCUMENTS FOR USE WITH THIS DOCUMENT.



| | | |
|----------|----------|--------------|
| DATE: | 06.21.13 | |
| DWG. BY: | ADS | CHK. BY: HFN |
| SCALE: | NTS | |
| DWG. #: | JW018 | |

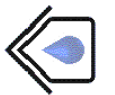
SHEET
12
OF 14

10/22/2020 2:10 PM

c:\users\luiz.lopes\desktop\manager\building_drops\projects\jeld-wen\jw018_2020-10-22.dwg

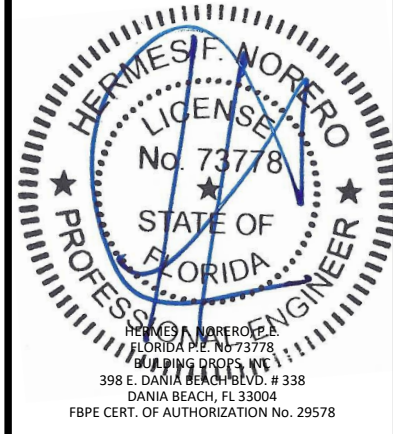
TITLE: CUSTOM CLAD WOOD
OUTSWING DOORS
(NON-HVHZ)/(IMPACT)
SHOOT BOLT STRIKE DETAILS

PREPARED BY:
BUILDING DROPS, INC.
398 E. DANIA BEACH BLVD., STE. 338
DANIA BEACH, FL 33004
PH: (954) 999-8478
FAX: (954) 744-4738
WEB: www.buildingdrops.com



| REMARKS | BY | DATE |
|---------------------|----|-------|
| 7TH FBC CODE CHANGE | LL | 10/20 |
| | | |
| | | |

THE INSTALLATION DETAILS DESCRIBED HEREIN ARE GENERIC AND MAY NOT REFLECT ACTUAL CONDITIONS FOR A SPECIFIC SITE. IF SITE CONDITIONS CAUSE INSTALLATION TO DEVIATE FROM THE REQUIREMENTS DETAILED HEREIN, A LICENSED ENGINEER OR ARCHITECT SHALL PREPARE SITE SPECIFIC DOCUMENTS FOR USE WITH THIS DOCUMENT.



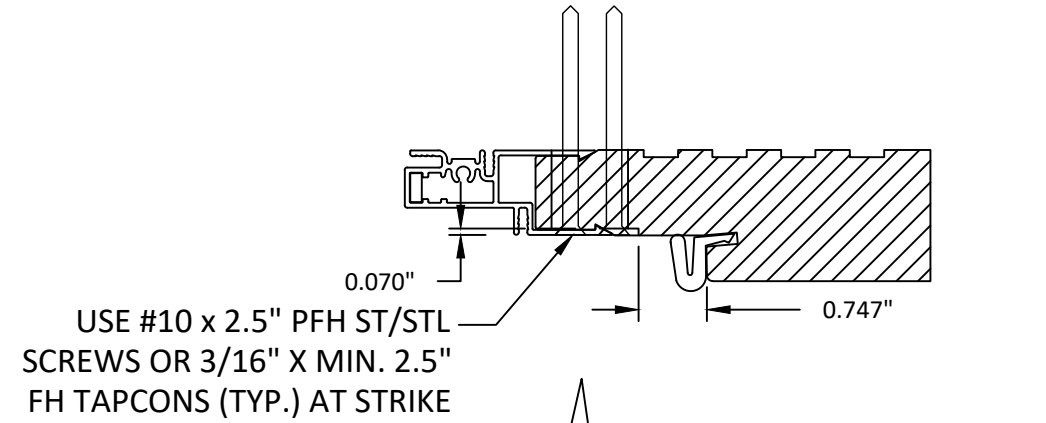
DATE: **06.21.13**

DWG. BY: **ADS** CHK. BY: **HFN**

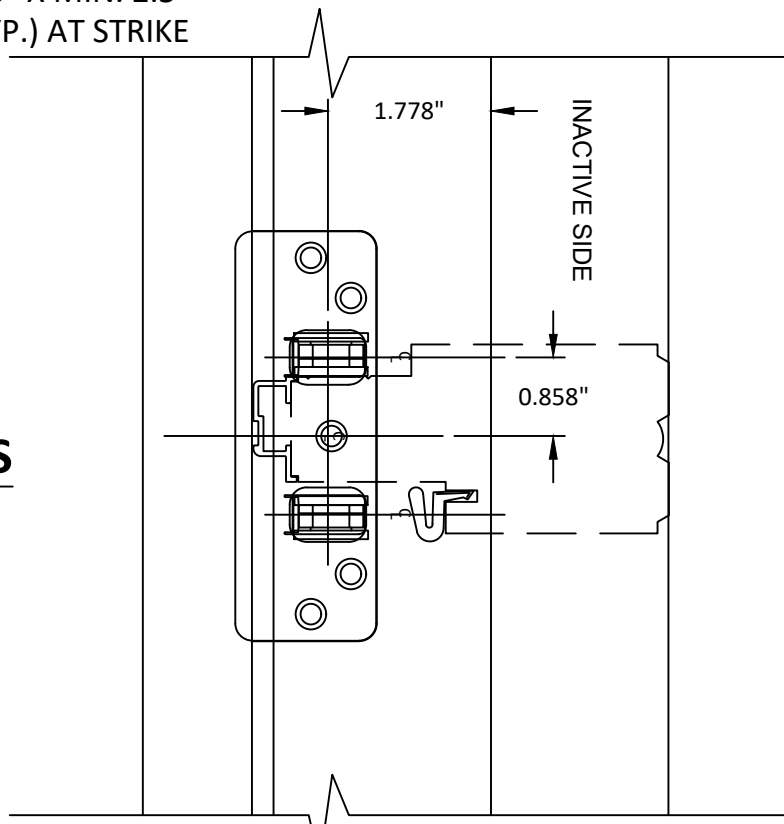
SCALE: **NTS**

DWG. #: **JW018**

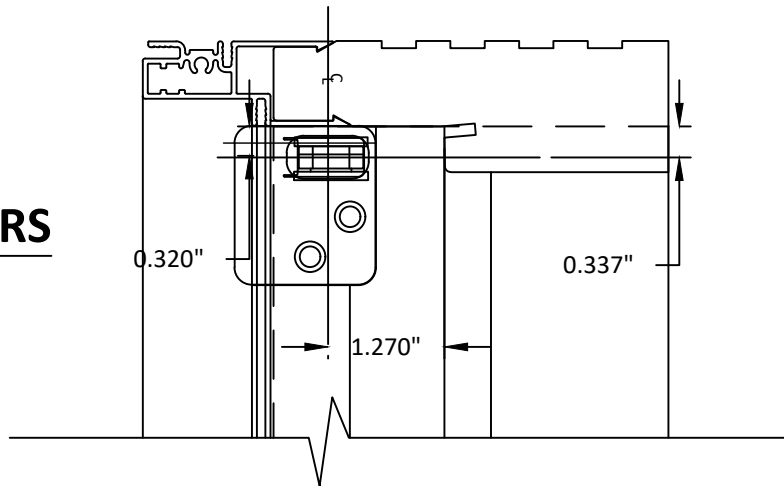
SHEET
13
OF 14



PAIR DOORS

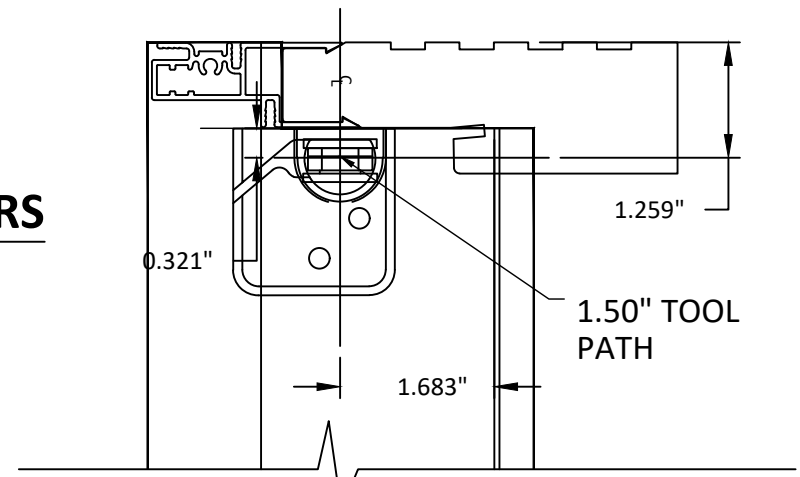


SINGLE DOORS

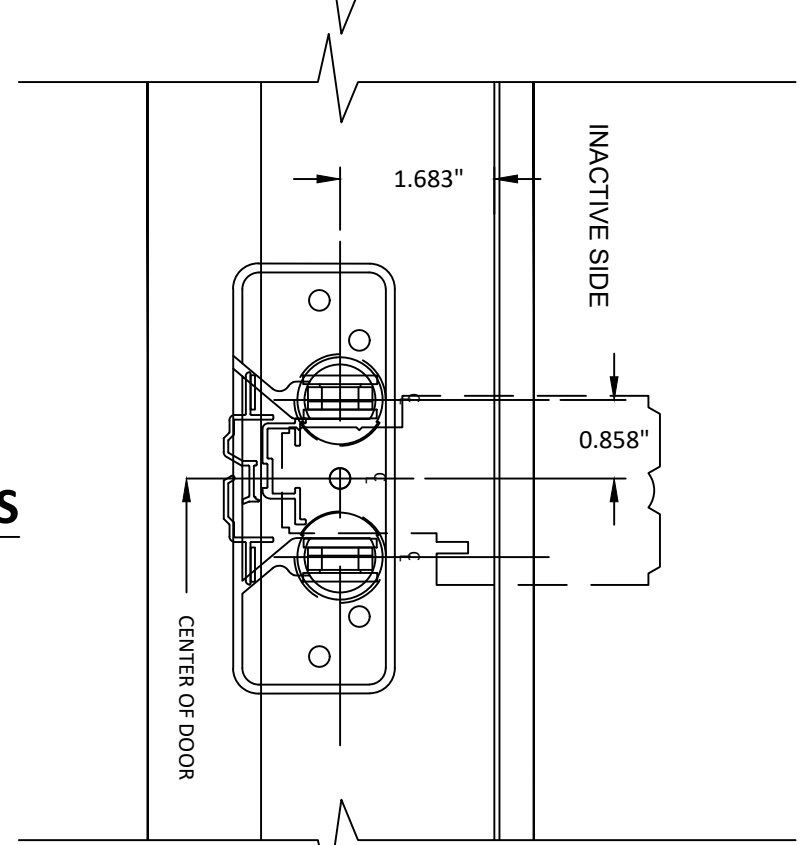


J
13 TYP. SHOOT BOLT STRIKE DETAIL
AT HEAD

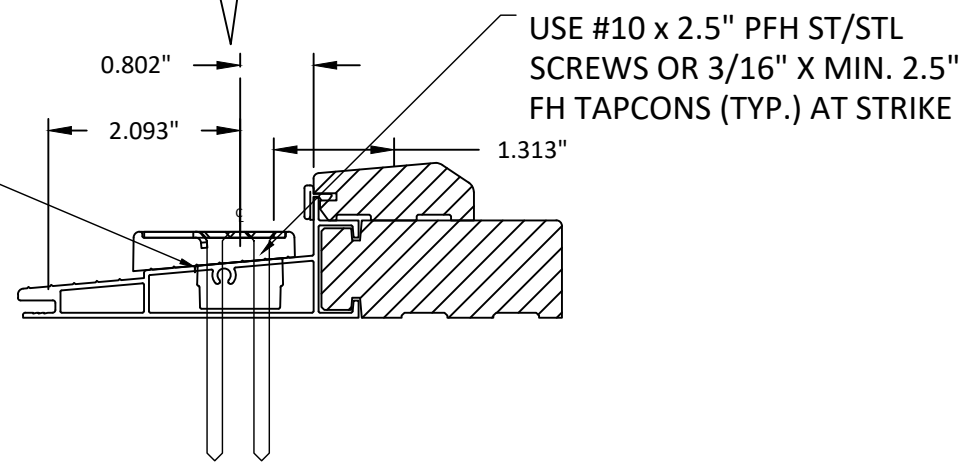
SINGLE DOORS



PAIR DOORS



BORE 1" HOLE IN TOP OF SILL EXTRUSION. DO NOT PUNCTURE BTM OF SILL.



K
13 TYP. SHOOT BOLT STRIKE DETAIL
AT THRESHOLD

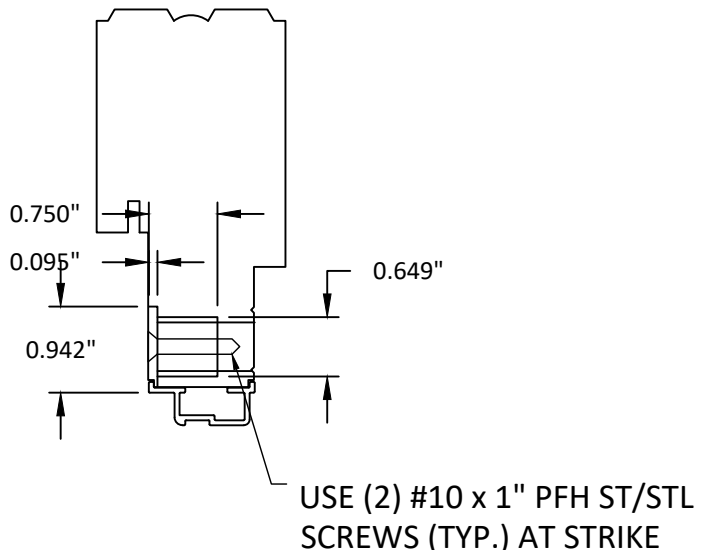
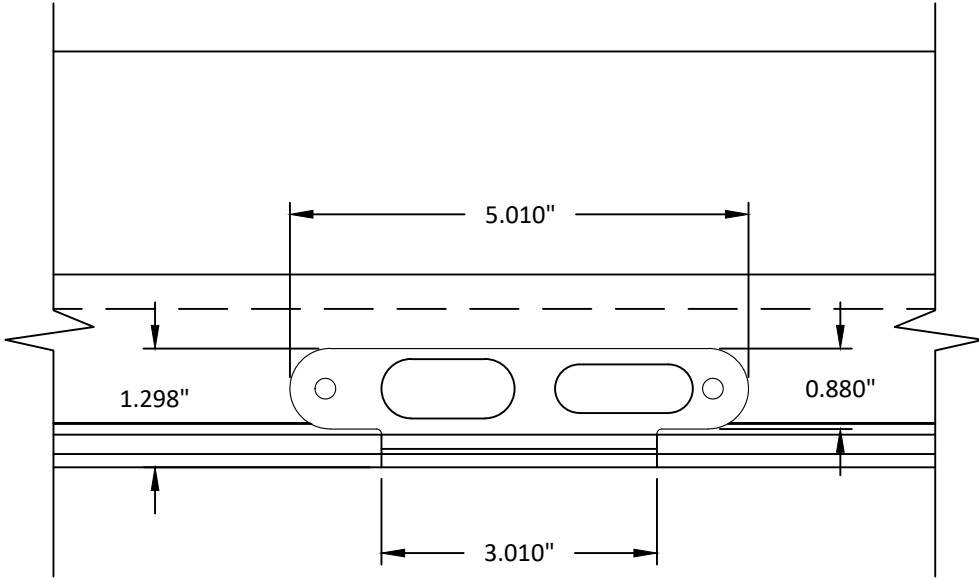
TITLE: CUSTOM CLAD WOOD
OUTSWING DOORS
(NON-HVHZ)/(IMPACT)
LATCH & DEADBOLT STRIKE DETAILS

PREPARED BY:
BUILDING DROPS, INC.
398 E. DANIA BEACH BLVD., STE. 338
DANIA BEACH, FL 33004
PH: (954) 999-8478
FAX: (954) 744-4738
WEB: www.buildingdrops.com

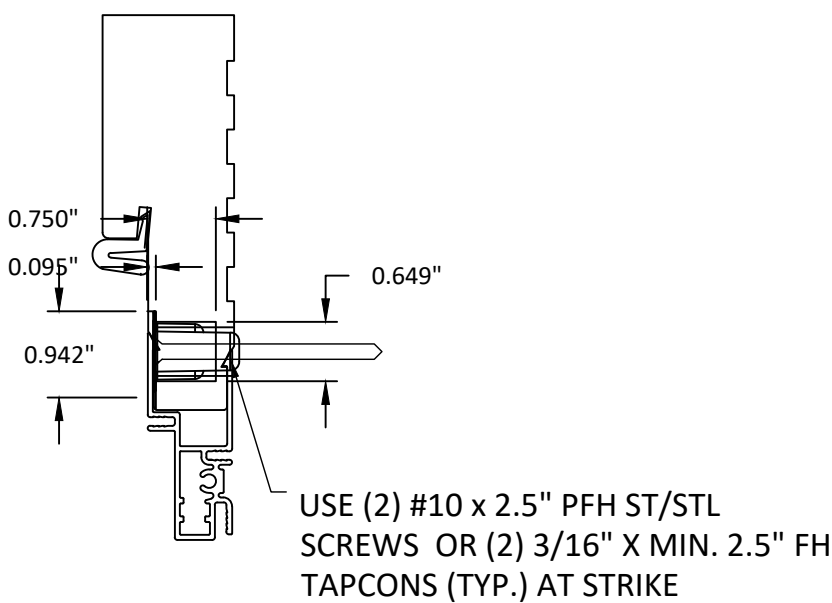
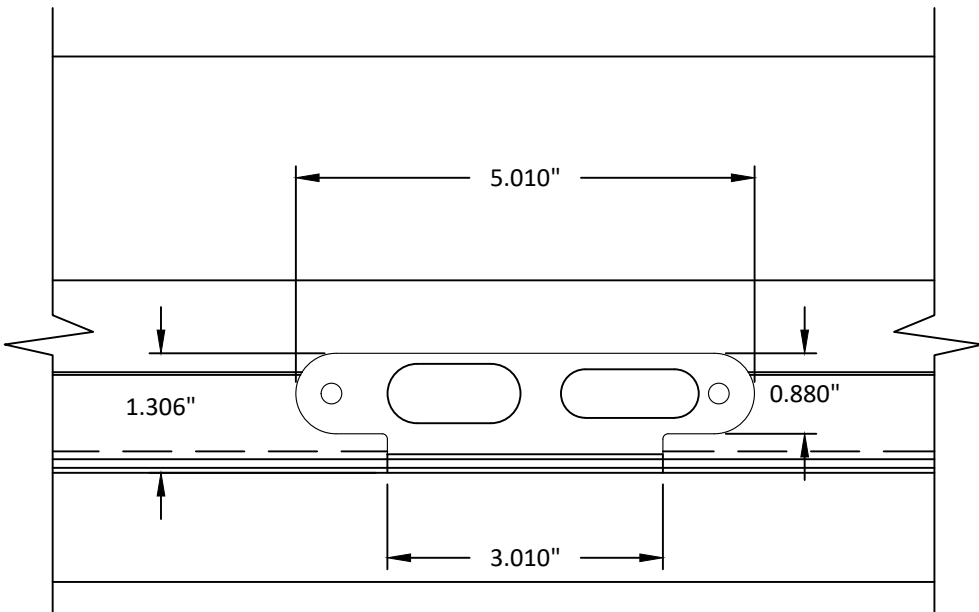


| REMARKS | BY | DATE |
|---------------------|----|-------|
| 7TH FBC CODE CHANGE | LL | 10/20 |
| | | |
| | | |

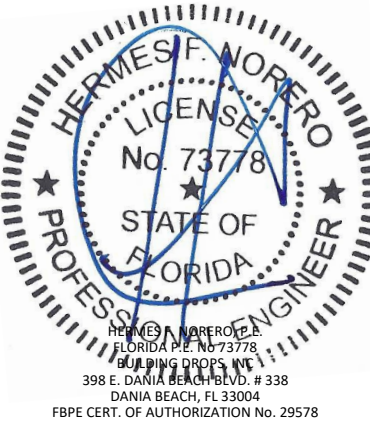
THE INSTALLATION DETAILS DESCRIBED HEREIN ARE GENERIC AND MAY NOT REFLECT ACTUAL CONDITIONS FOR A SPECIFIC SITE. IF SITE CONDITIONS CAUSE INSTALLATION TO DEVIATE FROM THE REQUIREMENTS DETAILED HEREIN, A LICENSED ENGINEER OR ARCHITECT SHALL PREPARE SITE SPECIFIC DOCUMENTS FOR USE WITH THIS DOCUMENT.



L
14 TYP. LATCH & DEADBOLT STRIKE
AT ASTRAGAL



M
14 TYP. LATCH & DEADBOLT STRIKE
AT JAMB FRAME



| | | |
|----------|----------|--------------|
| DATE: | 06.21.13 | |
| DWG. BY: | ADS | CHK. BY: HFN |
| SCALE: | NTS | |
| DWG. #: | JW018 | |

SHEET
14
OF 14

c:\users\luz_lopez\desktop\manager\building_drops\projects\jeld-wen\cc-20-1002\dwgs\jw018_2020-10-22.dwg 10/22/2020 2:10 PM